

12th September 2025
TRANSPORT ACTIVITIES
Air Transport Flash Statistics
July 2025

MOVEMENT OF PASSENGERS AT NATIONAL AIRPORTS MAINTAINED GROWTH TREND

In **July 2025**, 7.6 million passengers and 22.8 thousand tonnes of freight and mail were handled at national airports, corresponding to year-on-year variations of +5.2% and +3.2%, respectively, compared with July 2024 (+6.0% and +3.9%, in the previous month, in the same order).

In July 2025, there was a daily average of 126.0 thousand passengers disembarked, higher than the one registered in July 2024 (119.8 thousand), recording an increase of 5.2%.

Between **January and July of 2025**, the number of passengers handled increased by 4.9% and the movement of freight and mail increased by 2.6% (+4.7% and +14.0% in the same period of 2024, in the same order).

The United Kingdom was the main country of origin and destination of flights, having recorded increases in the number of disembarked (+2.9%) and embarked (+2.6%) passengers compared with the same period of 2024. France and Spain ranked 2nd and 3rd as the main countries of origin and destination.


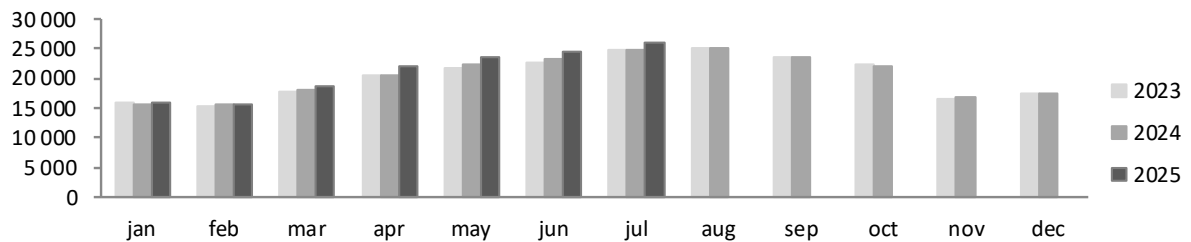

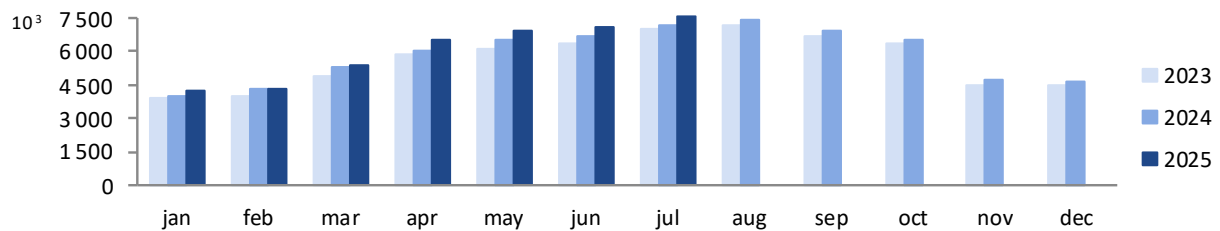

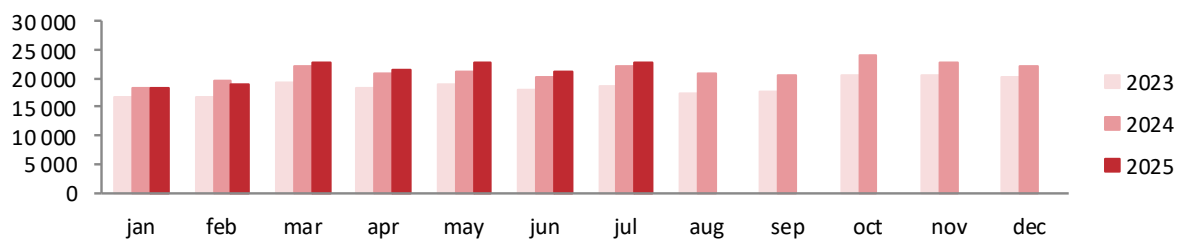
Consult the information on the [Interactive Application](#) (available only in Portuguese).

TRAFFIC AT NATIONAL AIRPORTS – MONTHLY VALUES

In **July 2025**, 26.2 thousand commercial aircrafts landed at national airports, corresponding to 7.6 million passengers (embarked, disembarked and direct transits) and 22.8 thousand tonnes of freight and mail were handled (+4.8%, +5.2% and +3.2%, respectively, compared with July 2024). In the previous month there were variations of: +4.9%, +6.0% and +3.9% in the same order.

Figure 1

AIRCRAFTS LANDED, PASSENGERS AND FREIGHT/MAIL MOVEMENT AT NATIONAL AIRPORTS

 Aircrafts landed (No)

 Movement of passengers (No)

 Movement of freight and mail (t)


Source: Survey to airports and aerodromes (ANA/ANAC/Statistics Portugal)

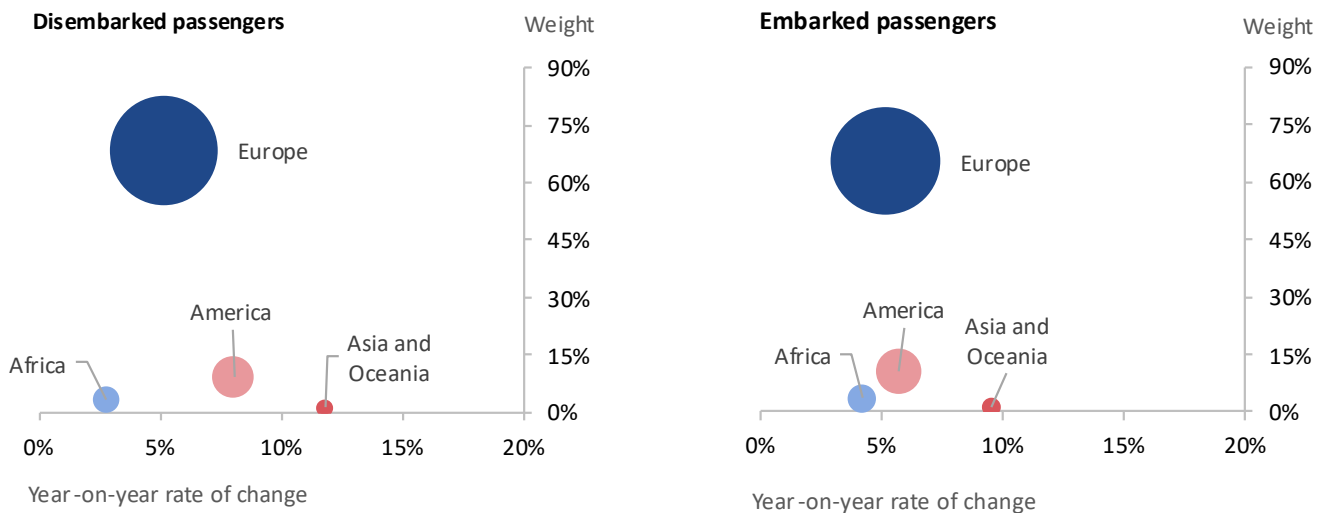
In July 2025, 82.2% of passengers disembarked at national airports corresponded to international traffic, reaching 3.2 million passengers (+5.4%¹), mostly from the European continent (68.6% of the total), corresponding to an increase of 5.1% compared with July 2024. The American continent was the second main origin, concentrating 9.3% of the total passengers disembarked (+8.0%).

¹ Unless stated otherwise, the rates of change presented in this press release correspond to year-on-year rates of change.

Regarding embarked passengers, 80.9% corresponded to international traffic, totalling nearly 3 million passengers (+5.3%), having 65.6% of the total as main destination airports in the European continent, recording an increase of 5.2% compared with July 2024. Airports in the American continent were the second main destination of embarked passengers (10.5% of the total; +5.7%).

Figure 2

PASSENGERS DISEMBARKED AND EMBARKED AT NATIONAL AIRPORTS BY NATURE AT INTERNATIONAL TRAFFIC,
BY CONTINENT OF ORIGIN/DESTINATION – JULY 2025



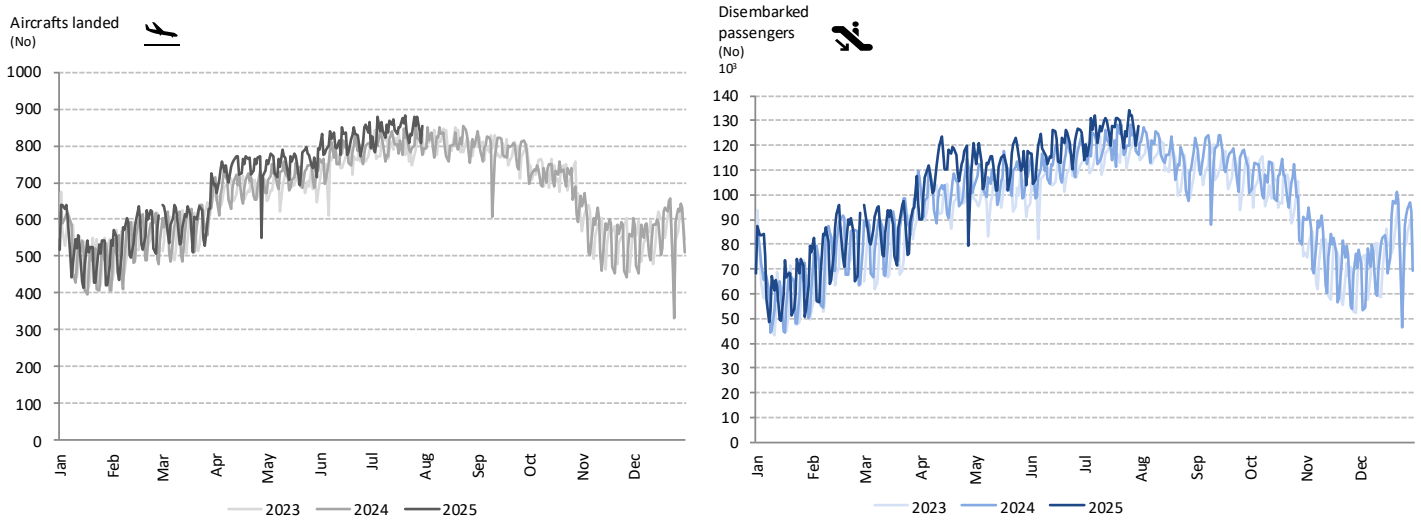
Source: Survey to airports and aerodromes (ANA/ANAC/Statistics Portugal)

The daily movement of aircrafts and passengers is typically influenced by seasonal and weekly cycle fluctuations. The highest daily values are generally recorded during the summer period and, in 2024, Sunday was the day of the week with the highest number of disembarked passengers.

Since the beginning of 2025, there have been historic monthly highs in the number of passengers handled at national airports, except for February. In terms of arrivals, there was a daily average of 126.0 thousand passengers disembarked in July 2025, higher than the value registered in July 2024 (119.8 thousand), recording an increase of 5.2%.

Figure 3

AIRCRAFTS LANDED AND DISEMBARKED PASSENGERS AT NATIONAL AIRPORTS – DAILY



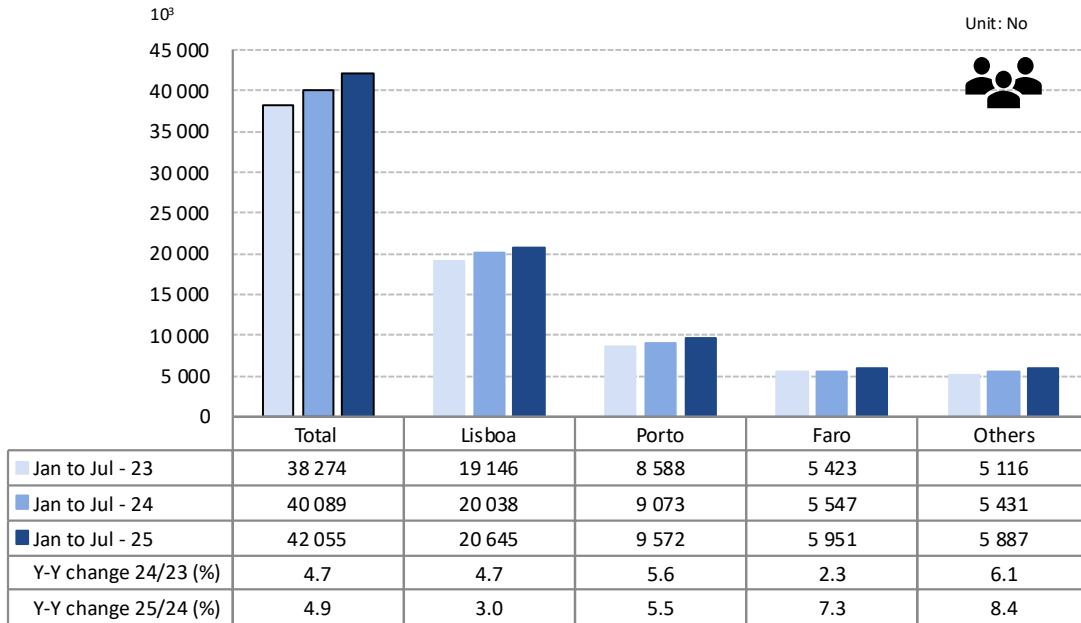
Source: Survey to airports and aerodromes (ANA/ANAC/Statistics Portugal)

TRAFFIC AT NATIONAL AIRPORTS – ACCUMULATED VALUES

Between **January and July of 2025**, the movement of passengers at national airports increased by 4.9% compared with the same period of 2024 (+4.7% in 2024). The movement of passengers in Lisboa airport corresponded to 49.1% of the total handled passengers (20.6 million), +3.0% compared with the same period of 2024. Faro airport recorded an increase of 7.3% in the movement of passengers (nearly 6 million; 14.2% of the total) and Porto airport accounted for 22.8% of the total passengers handled (9.6 million) and increased by 5.5%.

Figure 4

MOVEMENT OF PASSENGERS AT NATIONAL AIRPORTS



Source: Survey to airports and aerodromes (ANA/ANAC/Statistics Portugal)

Considering the volume of passengers disembarked and embarked on international flights between January and July of 2025, the United Kingdom was the main country of origin and destination of flights, having recorded increases in the number of disembarked (+2.9%) and embarked (+2.6%) passengers compared with the same period of 2024. In the opposite direction, France recorded decreases in the number of disembarked (-1.5%) and embarked passengers (-1.3%) and occupied the 2nd position. Spain, Germany and Italy ranked 3rd, 4th and 5th, respectively, as the main countries of origin and destination.

Table 1

MAIN COUNTRIES OF ORIGIN AND DESTINATION OF FLIGHTS WITH PASSENGERS AT NATIONAL AIRPORTS

Ranking	Country of origin (of the flight)	Jan to Jul 2025		Ranking	Country of destination (of the flight)	Jan to Jul 2025	
		Passengers disembarked (10 ³)	Y-on-Y change (%)			Passengers embarked (10 ³)	Y-on-Y change (%)
1	United Kingdom	2 875.4	2.9	1	United Kingdom	2 784.6	2.6
2	France	2 471.4	-1.5	2	France	2 376.5	-1.3
3	Spain	2 101.0	0.5	3	Spain	2 061.7	1.7
4	Germany	1 581.7	7.9	4	Germany	1 556.2	7.8
5	Italy	1 023.9	9.8	5	Italy	1 018.6	9.8

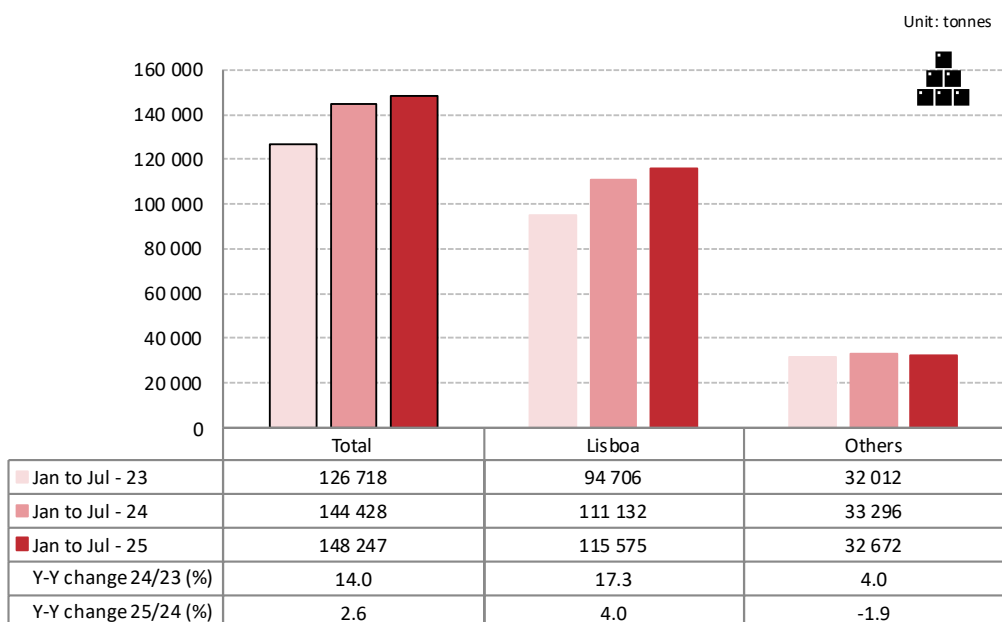
Source: Survey to airports and aerodromes (ANA/ANAC/Statistics Portugal)

Between January and July of 2025, there was an increase (+2.6%) in freight and mail handled at national airports, totalling 148.2 thousand tonnes. The movement of freight and mail at Lisboa airport represented 78.0% of the total, reaching 115.6 thousand tonnes (+4.0% compared with the same period of 2024).

Considering the group of other airports, the movement of freight and mail decreased by 1.9%.

Figure 5

FREIGHT AND MAIL MOVEMENT AT NATIONAL AIRPORTS



Source: Survey to airports and aerodromes (ANA/ANAC/Statistics Portugal)

METHODOLOGICAL NOTES

In this Press Release the following statistical data are used:

2025: preliminary results;

2024: provisional results;

2023: definitive results.

Main national airports (considered in this Press Release as national airports): Lisboa, Porto, Faro, Ponta Delgada, Madeira, Porto Santo, Beja, Horta, Flores, Santa Maria, Terceira, Pico, Graciosa, São Jorge, Corvo, Portimão, Bragança, Cascais, Vila Real and Viseu.

SOURCES:

Survey to airports and aerodromes (ANA/ANAC/Statistics Portugal)

MAIN CONCEPTS:

Commercial aviation - Air transport flight performed for the public transport of passengers, freight or mail, for remuneration and for hire.

Commercial air traffic - Movement of aircrafts, passengers, freight and mail in commercial aviation.

INTERACTIVE APPLICATION AT STATISTICS PORTUGAL:

[Interactive Application](#) (available only in Portuguese)

MONTHLY INDICATORS AT STATISTICS PORTUGAL PORTAL:

[Aircrafts landed \(No.\) in airports by Geographic localization, Type of traffic and Nature of traffic; Monthly](#)

[Aircrafts landed \(No.\) in airports by Continent of origin; Monthly](#)

[Aircrafts take-offs \(No.\) in airports by Geographic localization, Type of traffic and Nature of traffic; Monthly](#)

[Disembarked passengers \(No.\) in airports by Geographic localization, Type of traffic and Nature of traffic; Monthly](#)

[Disembarked passengers \(No.\) in Airports by Continent of origin; Monthly](#)

[Embarked passengers \(No.\) in airports by Geographic localization, Type of traffic and Nature of traffic; Monthly](#)

[Embarked passengers \(No.\) in airports by Destination continent; Monthly](#)

[Passengers in direct transit \(No.\) in airports by Geographic localization, Type of traffic and Nature of traffic; Monthly](#)

[Disembarked load \(t\) in airports by Geographic localization, Type of traffic and Nature of traffic; Monthly](#)

[Embarked load \(t\) in airports by Geographic localization, Type of traffic and Nature of traffic; Monthly](#)

[Disembarked mail \(t\) in airports by Geographic localization, Type of traffic and Nature of traffic; Monthly](#)

[Embarked mail \(t\) in airports by Geographic localization, Type of traffic and Nature of traffic; Monthly](#)



DIIISTAQUE

PRESS RELEASE

ACRONYMS AND DESIGNATIONS

ANA	Portugal Airports, S.A.
ANAC	National Civil Aviation Authority
INE	Statistics Portugal

Next Press Release (monthly) - Air Transport Flash Statistics – 14th October 2025

Next Press Release (quarterly) - Transport activities (Q3 2025) – 5th December 2025
