

# The National Data Infrastructure

## New statistics and new partnerships

Francisco Lima

Conselho Superior de Estatística, 36ª Reunião Plenária

Lisboa, 15 December 2023



INSTITUTO NACIONAL DE ESTATÍSTICA  
STATISTICS PORTUGAL



# Outline

- I. Statistics Portugal
- II. The National Data Infrastructure
- III. Partnerships
- IV. Evidence
- V. The way forward



# I. Statistics Portugal

Statistics Portugal is the central statistical authority,

independent,

with mandate for data collection and access to data,

data for statistical purposes,

producing official statistics with impartiality and objectivity

# Statistics Portugal

## Mission and Vision

The [Mission](#) of Statistics Portugal is to produce, in an **independent** manner, high-quality official statistical information, relevant for the society, while promoting the coordination, the analysis, the innovation and the dissemination of the national statistical activity and ensuring integrated data storage.

[Vision](#). Statistics Portugal is recognized as an independent and trustworthy statistical authority, which develops methodological advanced statistical processes, resorts to technological innovation, and data science, and integrates multiple sources for statistical purposes. With all due respect to citizens and entities confidentiality, it delivers valuable statistics to society for better knowledge, research and decision-making.

# Statistics Portugal



INSTITUTO NACIONAL DE ESTATÍSTICA  
STATISTICS PORTUGAL

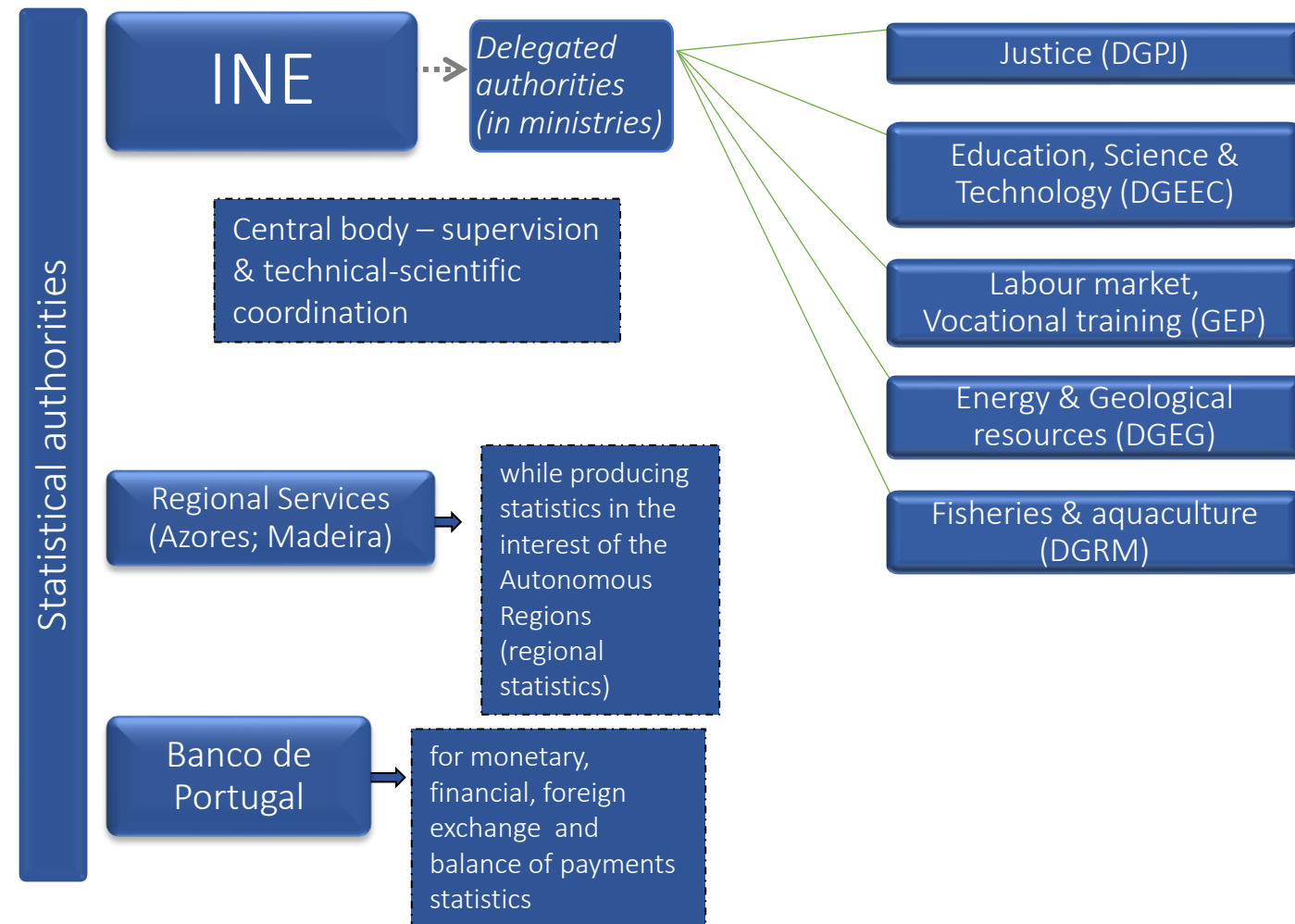
- Staff: ~600
- Delegations: Faro, Évora, Coimbra, Porto
  - Azores and Madeira with regional statistical services
- More than 770 information dissemination moments p/ year
- More than 370 press releases and publications p/ year
- The [calendar](#) rules
  - w/ a fixed daily hour



## National Statistical Law (22/2008, 13 May)

# Statistics Portugal

## A centralized system



# International Statistical System

INE participates in  
different layers of  
decision and  
cooperation

## European Statistical System (ESS)

- ESS Committee
- Eurostat + Member States National Statistical Institutes + EFTA + Switzerland



## Community of Portuguese Speaking-countries (CPLP)



## OECD

- Committee on Statistics and Statistical Policy

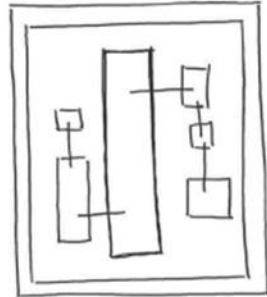
## United Nations Economic Commission for Europe (UNECE)

## United Nations

- Statistical Commission



## II. The National Data Infrastructure

Appropriation and use of administrative data and other sources	Partnerships	New roles
Data integration		Information security and data protection
Innovation	Integrate and share platforms, algorithms, knowledge, ...	Increase the economic and social value of the public good: statistical information



# The National Data Infrastructure (NDI)

From 2018 onwards, the development of NDI by Statistics Portugal is ongoing

- Single point access to several types of data and make it available to multiple purposes and users
- Use of multiple data sources
- Increase the analytical capacity and flexibility in data management
- Exploitation of new data sources for statistical and scientific purposes
- Increase timeliness, relevance and granularity

# The National Data Infrastructure (NDI)

- Data integration and interoperability
- Metadata catalogue – metainformation, **Data Catalogue**
- Confidentiality + Information security and data protection
  - **Certification** ISO 27001 (expanding), 27701 (planned), in addition to ISO 9001 (in process)
- Internal organization – assign new roles and create new units
- Specialization and increased complementarity between the different units
- Access other data – privately-held data (mobile, smart meters, IoT,...)



## III. Partnerships

- Data providers
- Data users
- Academia
- Multidimensional partnerships

# Partnerships with data providers

- Written agreements signed (or being prepared) with several public institutions that provide administrative data
- The agreements establish what's being provided and its frequency
- All agreements supported by a joint Technical Commission between Statistics Portugal and the partner institution
- Examples of institutions: Institute of Registries and Notary, Tax Authority, **Social Security**, **DG Health**, (ex)-SEF (Migration), ...
- Evolve to a model, as in the agreement with the **Tax Authority**, where Statistics Portugal becomes responsible for providing data access to researchers and to other institutions

# Partnerships with data users

- Fulfill the data needs of users: Media, public and private institutions (e.g., CCB, Fundação José Neves, Fundação, Francisco Manuel dos Santos, Infraestruturas de PT,...)
- Universities: U. Lisboa, ISCTE
- Users also use our [APIs](#) to extract directly information from the website

# Partnerships with Academia

- Partnerships with Academia assume different forms: joint projects, grants to Master and PhD students, consultancy, internships for master students, training, ...
- ISEG, IGOT, ISCTE, U Minho, UCP, IST, NOVA-SBE, NOVA-IMS, U Porto, ...

# Multidimensional Partnerships

- Statistical Regional Services – SREA and DREM
- Entities with delegated functions from Statistics Portugal – GEP, DGEEC, DGPIJ, DGRM, DGEG
- Banco de Portugal (the central bank)
- DG Territory, Ministry of Health, Turismo de Portugal, Ministry of Agriculture, Portuguese Environment Agency (APA), Development and Cohesion Agency (AD&C), ANACOM...
- PlanAPP
- Municipalities, AML, AMP, CIMs, CCDRs

# Access to microdata for scientific purposes

- Researchers from different institutions can access [microdata for scientific purposes](#)
  - The Integrated Business Account System
  - Quadros de Pessoal
  - Enterprises surveys – Innovation Survey, ICT use, International Trade, Management Practices,...
  - Family surveys – Labour Force Survey, ICT use, Survey on Living Conditions,...
  - Administrative data – IRS, IMT, IMI, IVA, e-fatura, ...
- Can also access [Public Use Files](#) (PUF)
  - Census (5% sample), Agricultural Census,...





## IV. Evidence

- Resident Population Database
- Integrated Data - Individuals and families
- Integrated Data – Enterprises
- Effort rates with permanent home loans
- SiT - Integrated Tourism Information System



# Resident Population Database

- Main project of data integration
- The Census with Administrative Data
- Goal: To produce census statistics on an annual basis after the Censos 2021
- Comparison with the Resident Population Estimates points to <0.5% differences
- Challenge: move to a new model of population and housing statistics
- New opportunities for the development of social and demographic statistics



# Resident Population Database

Major project of data  
integration

Instituto dos Registos e  
do Notariado  
Civil Register

Serviço de Estrangeiros  
e Fronteiras  
Immigration Register

Instituto de Informática  
da Segurança Social  
Social Security Register

Gabinete de Estratégia  
e Planeamento, MTSS  
Private Employment  
Register

Direção Geral de  
Estatísticas da  
Educação e Ciência  
Education Register

Autoridade Tributária  
Tax register

Caixa Geral de  
Aposentações  
State Pension and Work  
Fund Register

Instituto de Emprego e  
Formação Profissional  
Unemployment Register

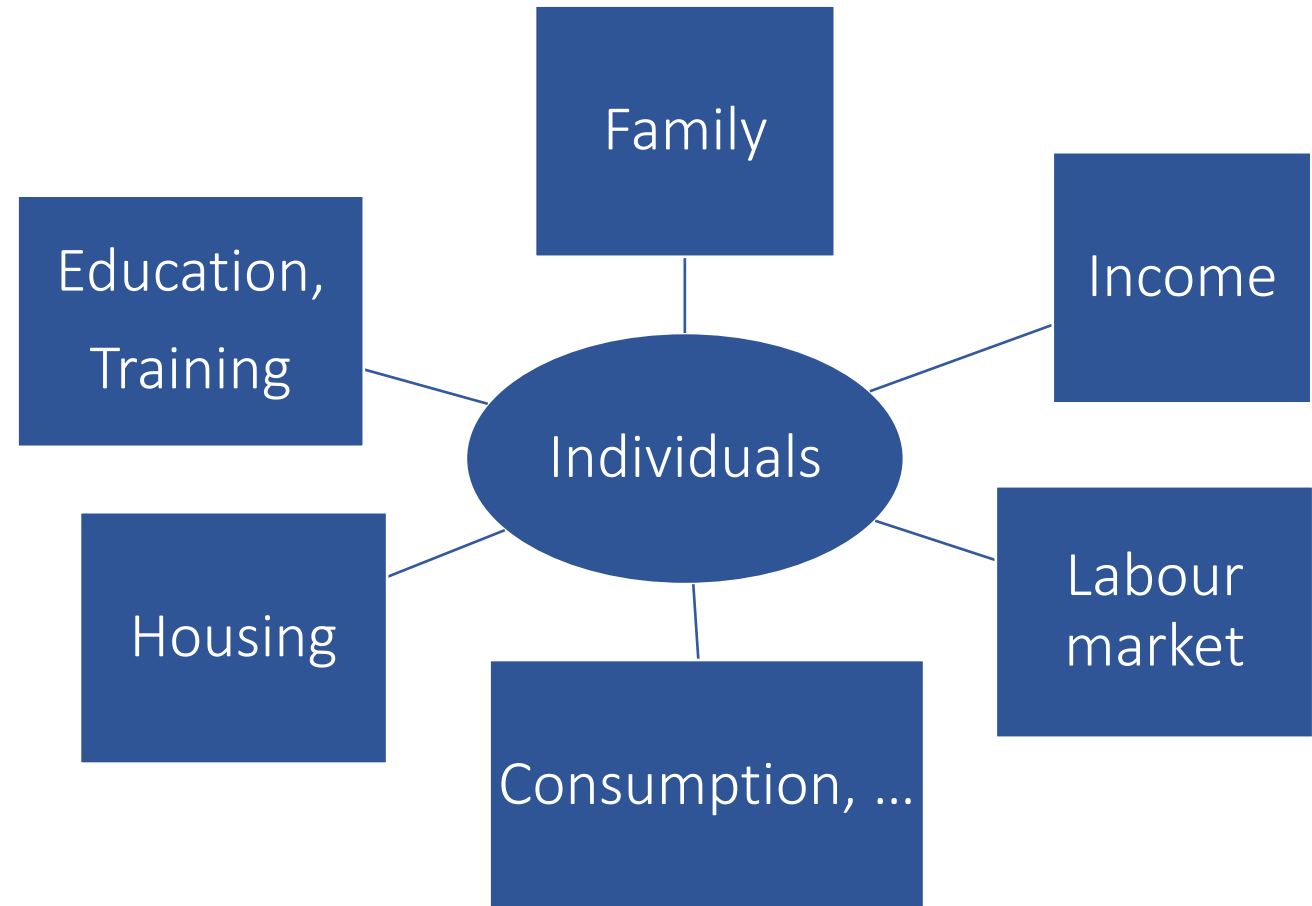
DG de Proteção Social  
Trabalhadores em  
Funções Públicas  
Social Protection for  
Public servants

Instituto do Emprego  
da Madeira  
Unemployment Register  
II

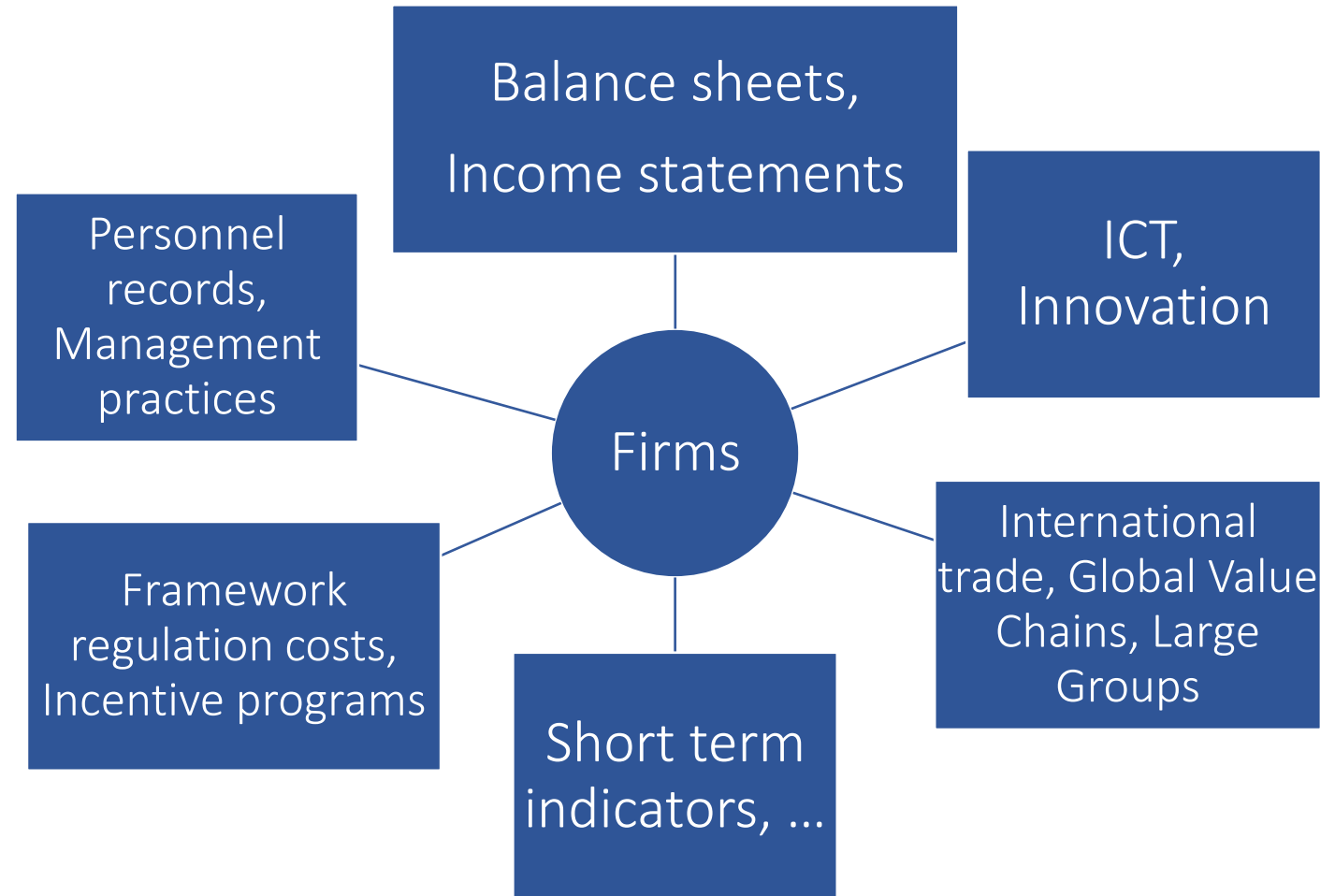
Direção Regional do  
Emprego dos Açores  
Unemployment Register  
III

Direção Regional de  
Educação da Madeira  
Education Register II

# Integrated Data Individuals and families

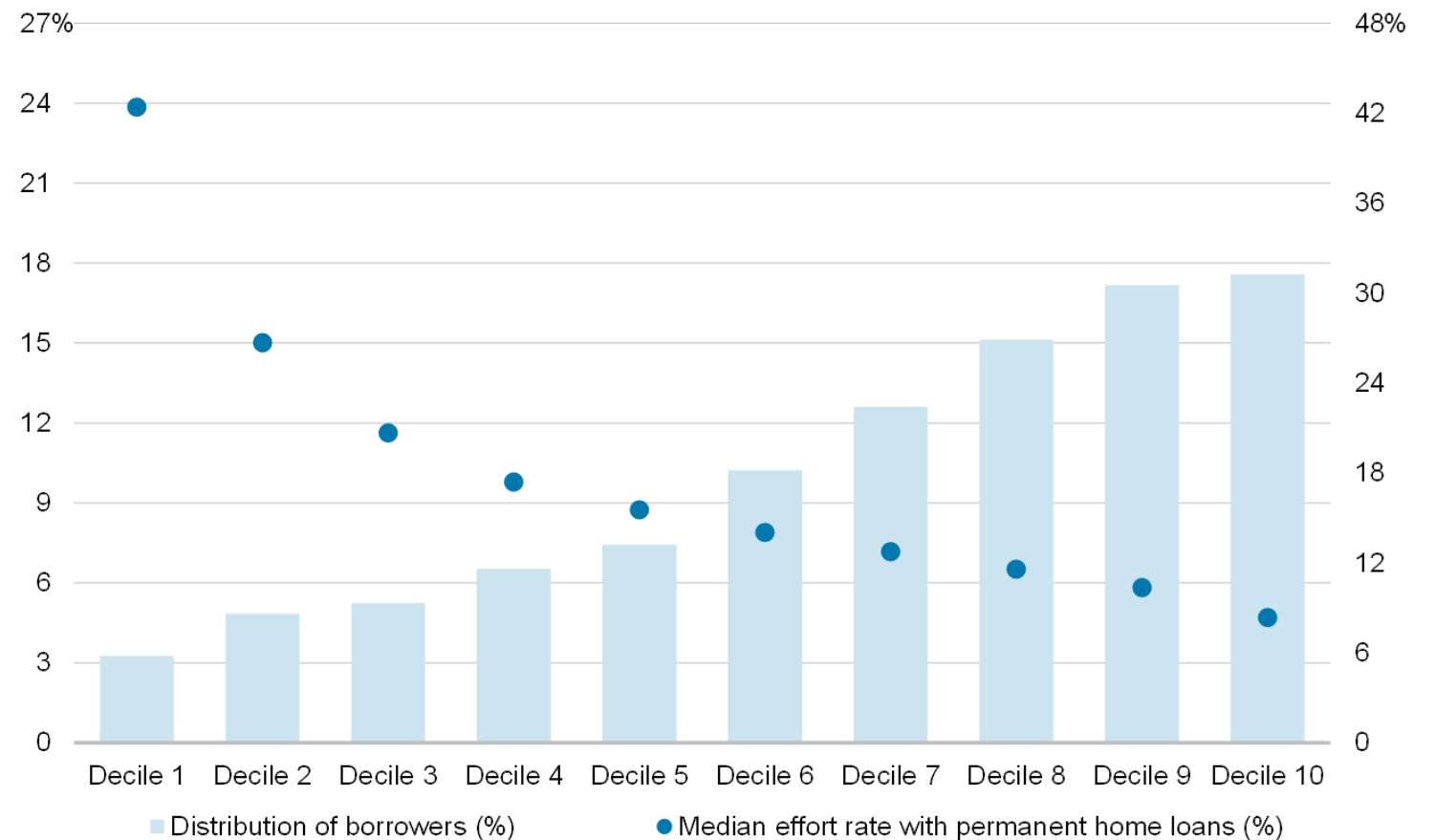


# Integrated Data Enterprises



# Effort rates with permanent home loans

Distribution of borrowers (left axis) and median effort rate with permanent home loans (right axis) by decile of gross reported income less personal income tax paid , Portugal, December 2021



# Effort rates with permanent home loans

- Releasing the [effort rates with permanent home loans](#), referenced to 2021
- Integrate information from INE and the Central Bank (BdP)
- INE: advantage of the development of the IND - National Data Infrastructure - [Income Statistics at local level](#) (w/ IRS from the Tax Authority) and the [Resident Population Database](#)
- BdP: the Central Credit Register, which compiles information on credit instalments for the acquisition or construction permanent owner-occupied housing for borrowers with responsibilities to the national financial system

# SiT Integrated Tourism Information System

- "System to System" approach and the adoption of a mixed model for data compilation, through administrative data appropriation and primary data collection
- In-house development and system supported by Statistics Portugal infrastructure – our *WebInq* platform (a single-entry point): primary data collection web page and automatic data transmission by XML

The screenshot displays the 'Permanência de hóspedes (durante o mês de referência)' form. It includes a table for 'País de residência habitual' with columns for 'Nº de Hóspedes que entraram no mês', 'Nº de Hóspedes que dormiram no mês', and 'Nº de Dormidas (Noites)'. The form shows data for 'Portugueses residentes em Portugal' and 'Estrangeiros residentes em Portugal'. Below this, there is a section for 'Residentes no Estrangeiro, por países de residência' with a table for countries like 'DE: Alemanha' and 'LU: Luxemburgo'. A 'Sub-Total' row is also present. A red arrow points from the 'VPP\_1' field in the first table to the XML code below, and a blue arrow points from the 'V3' field in the second table to the XML code.

```
<v nome="VPP_1">5</v>
<v nome="VPP_2">5</v>
<v nome="VPP_3">5</v>
<v nome="num_dias">31</v>
<v nome="pais_DE_V1">12</v>
<v nome="pais_DE_V2">12</v>
<v nome="pais_DE_V3">12</v>
<v nome="pais_DE_pais_dsg"><![CDATA[Alemanha]]></v>
<v nome="pais_LU_V1">6</v>
<v nome="pais_LU_V2">6</v>
<v nome="pais_LU_V3">6</v>
<v nome="pais_LU_pais_dsg"><![CDATA[Luxemburgo]]></v>
```



# SiT Integrated Tourism Information System

- Shift from a multiple data collection model, where several entities collect similar information, to a **centralized data collection** and distribution system
- Ensure the **legal provisions** to serve the information needs of the project partners - the national tourism authority and the central bank
- Set of variables to be surveyed subject to **public consultation**, by the project partners, business associations and companies in the sector, as well as by software houses
- Except for the webservices to obtain administrative data, the **entire process will be guaranteed by Statistics Portugal**, from data collection to distribution to partners

# SiT Integrated Tourism Information System

- A good example of what are the main goals of the National Data Infrastructure
- Statistics Portugal leverages its experience and in-house tools, and from the use of a widespread hierarchical language, making the sector transition and adaptation to the new transmission model much easier and minimizing the need for software development among most enterprises and software houses – **structural interoperability**
- Reduce burden and costs, eliminate redundancies, improve coverage, granularity and timeliness
- The ultimate output is a deeper knowledge of the sector to support policy evaluation and decision making

# V. The way forward

- The will to move forward – the strategy
- Internal organization and organizational culture
- Human resources and human capital
- Data integration, interoperability, metainformation
- Political commitment and legal process
- Strong partnerships
- Communication with stakeholders – the benefits for society must be clear

Thank you

Francisco Lima



INSTITUTO NACIONAL DE ESTATÍSTICA  
STATISTICS PORTUGAL