

12 December 2025
VITAL STATISTICS – MONTHLY DATA
November 2025

MORTALITY DECREASES 12.7% COMPARED WITH THE SAME MONTH OF 2024

In November 2025, there were 8,242 deaths, 461 less (-5.3%) than in the previous month. Compared to the same month of 2024, there was a decrease of 1,201 deaths (-12.7%). The number of deaths of children under 1 year of age was 21 (25 in the same month of 2024).

In October 2025, 7,527 live births were registered, 356 less (-4.5%) compared to September 2025, but 67 more (+0.9%) compared to the same month of 2024.

In October 2025, the natural balance was -1,142¹, having improved in relation to the same month of 2024, when it reached -1,677.

In October 2025, 3,740 marriages were celebrated, 1,233 less (-24,8%) than in September 2025, but 338 more (+9.9%) than in October 2024.

In this press release, Statistics Portugal provides **preliminary data** on the number of deaths per month until November 2025², and the number of live births and marriages per month until October 2025, that occurred in national territory. The indicators published and analyzed are available on the Official Statistics Portal (www.ine.pt), with geographical breakdowns NUTS 2 and NUTS 3. The hyperlinks to these statistics can be found in the Excel file published together with this Press Release. The information is obtained from the Sistema Integrado do Registo e Identificação Civil (SIRIC) until December 5th, 2025.

¹ The natural balance is calculated based on the difference between the number of live births of mothers residing in Portugal and the number of deaths of residents in Portugal.

² After the release of mortality data for 2022 and considering the decrease of the impact of deaths due to COVID-19 on mortality, the analysis regarding the number of deaths per week was suspended. However, the release of indicators regarding the number of weekly deaths, by NUTS 3 breakdown, until the 48th week of 2025, and daily deaths, by NUTS 2 breakdown, until November 30th, 2025, is assured.

1. IN NOVEMBER 2025, THE NUMBER OF DEATHS DECREASED 12.7% COMPARED TO THE SAME MONTH OF 2024

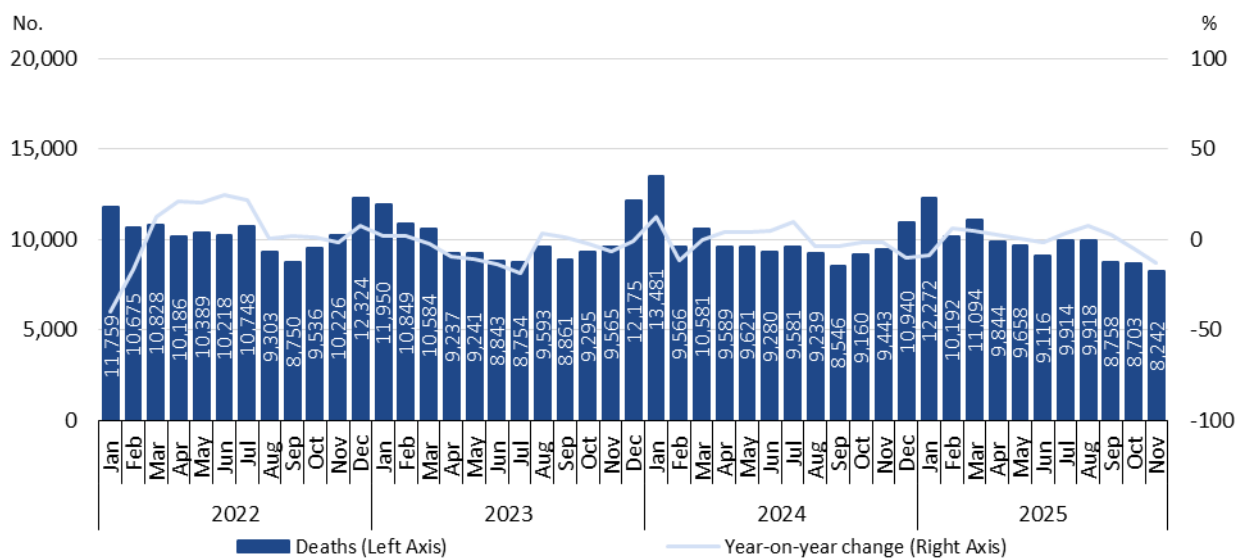
In November 2025, there were 8,242 deaths (of which 42 were from residents abroad), 461 less (-5.3%) than in the previous month. Compared to the same month of 2024, there was a decrease of 1,201 deaths (-12.7%).

In that month, the number of deaths of children under 1 year old was 21 (all of them born to mothers residing in Portugal), two more than in the previous month, but four less compared with the same month of 2024.

Between January and November, there were 107,711 deaths in national territory, 376 less (-0.3%) than in the same period of 2024, of which 219 were deaths of children under 1 year of age (235 in 2024).

Figure 1

DEATHS AND YEAR-ON-YEAR CHANGE, JANUARY 2022 TO NOVEMBER 2025



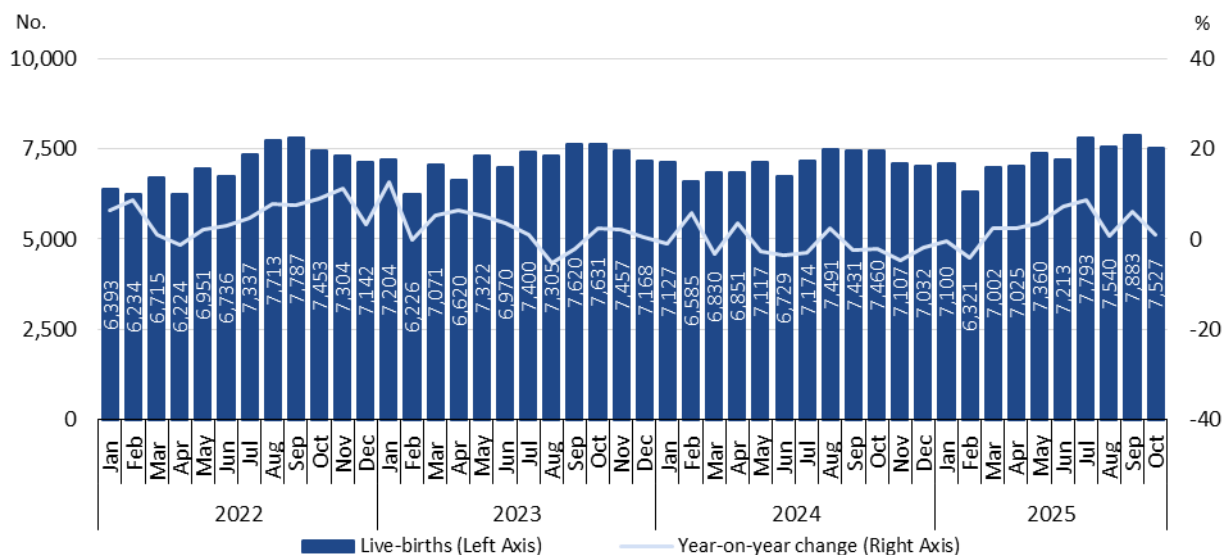
2. IN OCTOBER 2025, THE NUMBER OF LIVE BIRTHS INCREASED 0.9% COMPARED TO OCTOBER 2024

In October 2025, there were 7,527 live births (of which 29 were born to mothers residing abroad), corresponding to a decrease of 4.5% (356 less) compared to September 2025, but to an increase of 0.9% (67 more) compared to the same month of 2024.

In the first ten months of the year, 72,764 live births were registered in the country, 1,969 more (+2.8%) than in the same period of 2024, of which 218 were born to mothers residing abroad (255 in 2024).

Figure 2

LIVE BIRTHS AND YEAR-ON-YEAR CHANGE, JANUARY 2022 TO OCTOBER 2025



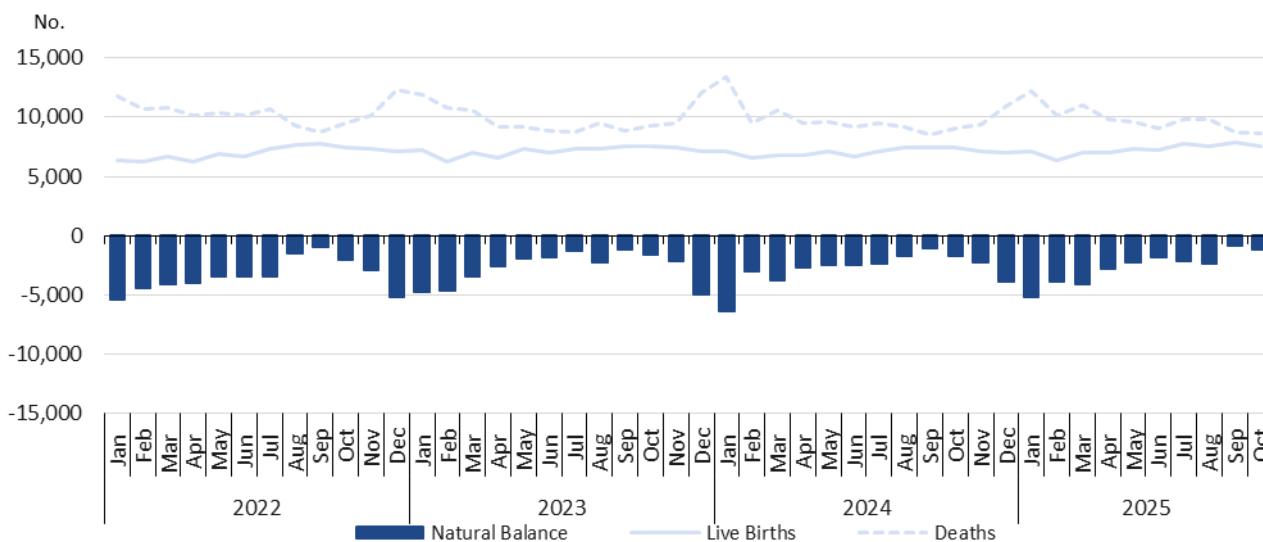
3. NATURAL BALANCE OF -1,142 IN OCTOBER 2025

In October 2025, the natural balance registered the value of -1,142, having worsened compared to the figure of September 2025 (-839), but having improved compared to the same month of 2024 (-1,677).

In the first ten months of the year, the cumulative value of the natural balance was -26,402 (-27,550 in the same period of 2024).

Figure 3

LIVE BIRTHS, DEATHS, AND NATURAL BALANCE, PORTUGAL, JANUARY 2022 TO OCTOBER 2025



Note: The natural balance is calculated based on the number of live births of mothers residing in Portugal and the number of deaths of residents in Portugal.

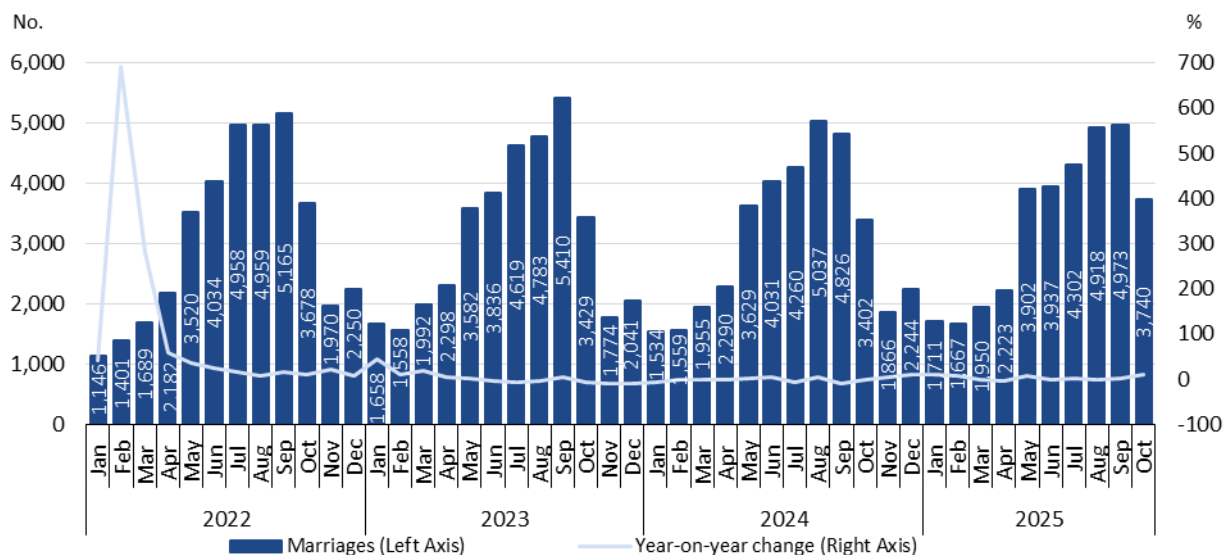
4. IN OCTOBER 2025, THE NUMBER OF CELEBRATED MARRIAGES INCREASED 9.9% COMPARED TO OCTOBER 2024

In October 2025, 3,740 marriages were celebrated, lower than the number registered in September 2025 (1,233 less; -24.8%), but higher than that registered in October 2024 (338 more; +9.9%).

In the first ten months of 2025, 33,323 marriages were celebrated, 800 more (+2.5%) than in the same period of 2024.

Figure 4

MARRIAGES AND YEAR-ON-YEAR CHANGE, JANUARY 2022 TO OCTOBER 2025



TECHNICAL NOTE

Statistics Portugal releases the **preliminary** monthly **numbers** of deaths, live births, and marriages based on the information registered in the Civil Register Offices until December 5th, 2025. Indicators on the preliminary monthly number of live births, deaths, and marriages, from January 2025 to October 2025, with geographical breakdowns up to NUTS 3, by NUTS 2024, as well as weekly number of deaths, until the 48th week 2025, by NUTS 3 and daily number of deaths, until November 30th, 2025, by NUTS 2 are made available on the Statistics Portugal Website.

Data are obtained from statistical operations of direct and exhaustive collection on live births, deaths and marriages in Portuguese territory using facts that are subject to compulsory civil registration (birth and death) in the Sistema Integrado do Registo e Identificação Civil (SIRIC).

In addition to administrative information obtained from Civil Register Offices, Statistics Portugal collects an additional set of variables identified as statistically pertinent to the National Statistic System (NSS) and the European Statistical System (EES). Data is recorded and sent electronically, in compliance with the requirements set out by Statistics Portugal and laid down in liaison with the Instituto de Registos e Notariado (IRN) and the Instituto de Gestão Financeira e Equipamentos da Justiça (IGFEJ).

CONCEPTS

Marriage: Contract signed by two persons that intend to start a family in full partnership and cohabitation according to legislation. Note: marriage can be held between persons from different or same sex.

Live birth: This is the complete expulsion or extraction from the mother's body, irrespective of the duration of the pregnancy, of a product of fertilization that, after separation, breathes or shows any other signs of life, such as a beating of the heart or umbilical cord or actual contraction of any muscle subject to voluntary movement, whether the umbilical cord has been severed and whether the placenta is retained.

Death: The permanent disappearance of vital functions.

Natural balance: The difference between the number of live births and the number of deaths during a given period.

Year-on-year change: The year-on-year change compares the level of a variable between the reference month and the same month of the previous year.

Next Press Release – 16 January 2026
