

9 February, 2026
 INTERNATIONAL TRADE
 December 2025

EXPORTS AND IMPORTS DECREASED IN DECEMBER 2025

In December 2025, exports and imports of goods recorded nominal year-on-year changes of -0.7% and -2.7%, respectively (-1.5% and -7.2%, in the same order, in November 2025). When transactions without transfer of ownership (TTE) are excluded, the contraction was identical for exports (-6.1% in November), but more pronounced for imports (-4.0%, -2.2% in November). The trade deficit in goods reached EUR 2,871 million, reflecting a reduction of EUR 190 million compared to December 2024. Excluding TTE, the trade deficit fell by EUR 302 million.

In December 2025, unit value indices (prices) remained negative for exports (-2.6%) and imports (-2.4%). These variations compare with -0.5% and -1.8%, respectively, in November 2025 and with -0.7% and -0.2%, in the same order, in December 2024.

This press release includes a summary of the first annual results for 2025, by Broad Economic Categories (BEC) and main partner countries. These results for 2025 point to increases in both flows: +0.5% in exports, slowing down from the previous year (+2.0%); +3.9% in imports, accelerating compared to 2024 (+2.0%). Excluding transactions without transfer of ownership (TTE), the increase in imports is less pronounced (+2.3%), while exports show a reversal, with a decrease of 1.6%.

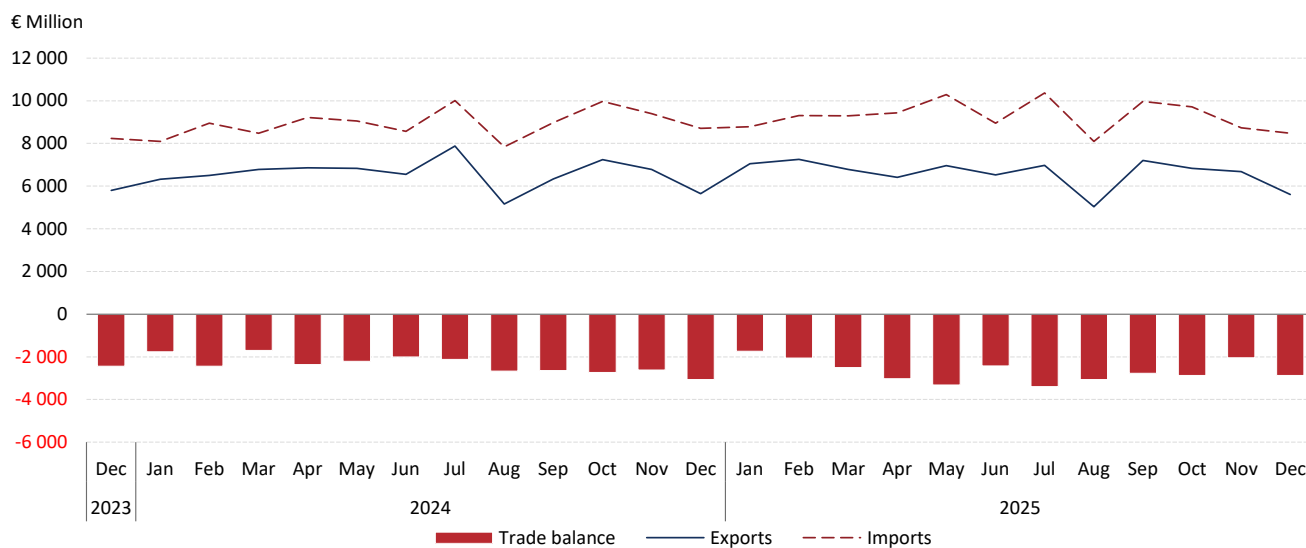
The trade deficit worsened by 3,752 million euros, reaching EUR 32,100 million in 2025. Transactions without transfer of ownership contributed to softening the increase in the deficit, which reached EUR 32,309 million (+3,544 million euros compared to 2024) when these transactions are excluded. On the other hand, *Fuels and lubricants* negatively impacted the trade balance in 2025, which totalled EUR -26,817 million when this category of goods is excluded, worsening by EUR 4,457 million from the previous year, as a result of more pronounced increases in both exports and imports: +2.5% and +6.6%, respectively (+1.5% and +3.1%, in the same order, in 2024).

The results presented in this press release may be subject to larger-than-usual revisions in the next releases due to the impact of recent changes in electronic customs declaration systems on the administrative information used in the compilation of international trade in goods statistics.



Figure 1

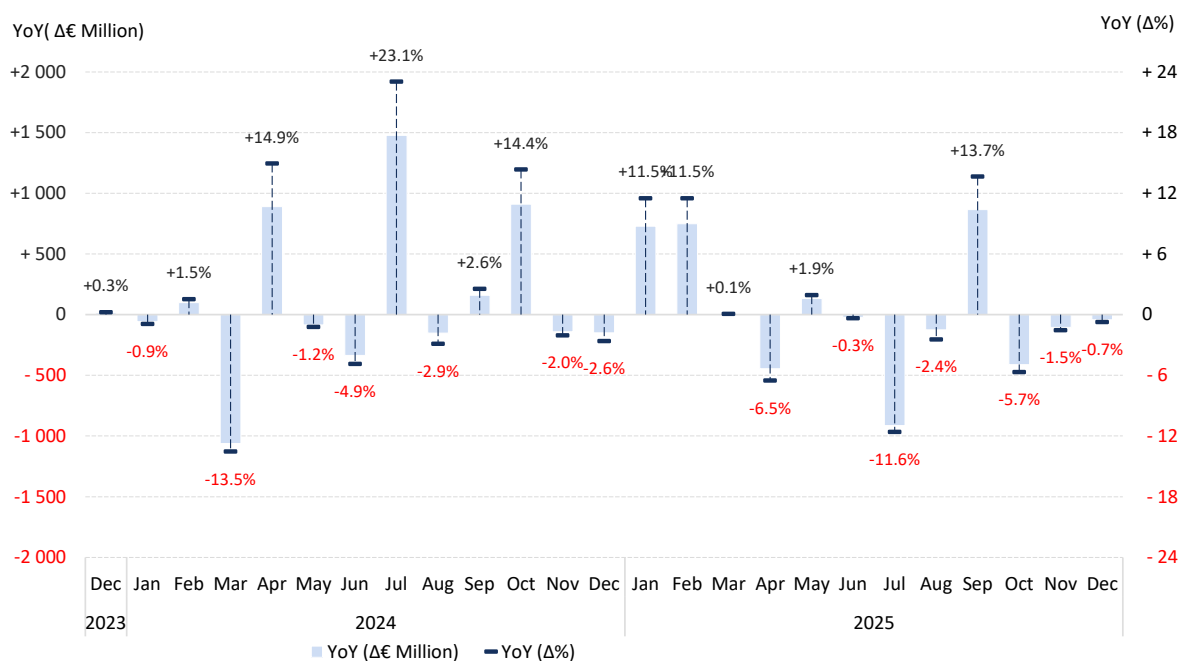
MONTHLY RESULTS OF INTERNATIONAL TRADE
EXPORTS, IMPORTS, AND TRADE BALANCE



FUELS AND LUBRICANTS AND TRANSPORT EQUIPMENT RECORDED THE LARGEST DECREASES IN DECEMBER EXPORTS

In December 2025, exports of goods registered a nominal year-on-year change of -0.7% (-1.5% in November 2025). Excluding TTE transactions, i.e. transactions with a view to or following processing (without transfer of ownership)¹, the decrease was identical (-6.1% in November 2025).

Figure 2
YEAR-ON-YEAR CHANGES IN EXPORTS (M€ AND %)



Excluding *Fuels and lubricants*, exports increased by 0.7% (after +2.7% in November), mainly reflecting the reduction in transactions of products in this category (-24.2%), still reflecting the shutdown of national refinery units in the last quarter of the year.

In December 2025, the unit value index (prices) of exports remained negative, at -2.6% (-0.5% in November 2025; -0.7% in December 2024). Excluding petroleum products, the price variation was also negative (-1.9%, after -0.4% in November 2025 and -0.6% in December 2024).

On a month-to-month basis, exports fell by 16.1% in December (after -2.3% in November 2025). Excluding TTE, the decrease was less pronounced (-12.7%; -6.6% in the previous month).

In the 4th quarter of 2025, exports decreased by 2.8% compared to the same period of the previous year (+1.7% in the quarter ending in November 2025). The decline is more pronounced when TTE are excluded (-3.6%, after -2.3% in the

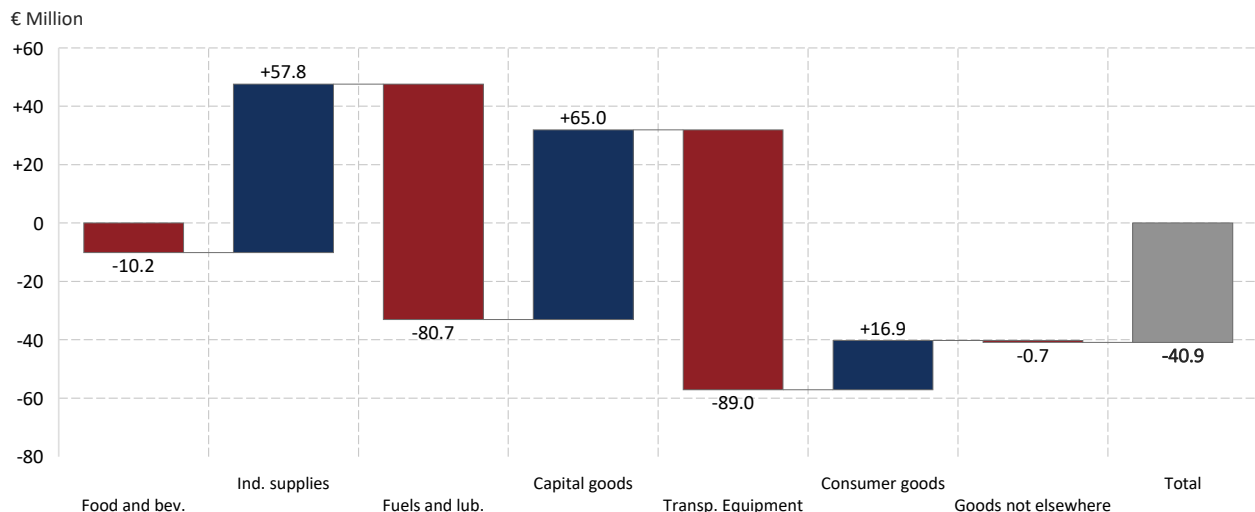
¹ See methodological notes 2 and 3 for more detail on the nature of transactions with a view to or following processing.

quarter ending in November 2025). These variations resulted mainly from the performance of *Fuels and lubricants*, which fell by 45.4%.

In annual terms, exports increased by 0.5% from the previous year (+2.0% in 2024). However, excluding transactions without transfer of ownership, there was a reversal in exports variation, -1.6% (after +1.1% in 2024).

In terms of product categories, in December 2025, there was a sharp decline in exports of *Fuels and lubricants* (-24.2%), reflecting a reduction in both transaction volume (-13.8%) and prices (-12.0%). This performance is associated, to a large extent, with the shutdown of national refinery units in the last months of the year. There was also a decrease in exports of *Transport equipment* (-8.7%), especially *Motor cars* for the United Kingdom.

Figure 3
 YEAR-ON-YEAR CHANGES IN EXPORTS (M€), BY BEC



In December 2025, taking into account the main partner countries in 2024, there were notable decreases in exports to the United States (-25.9%) and to the United Kingdom (-21.5%). In the first case, the reduction was mainly due to the performance of the *Fuels and lubricants* category, particularly *Crude petroleum oils*. In the latter, the decrease mainly reflected a decline in exports of *Motor cars*.

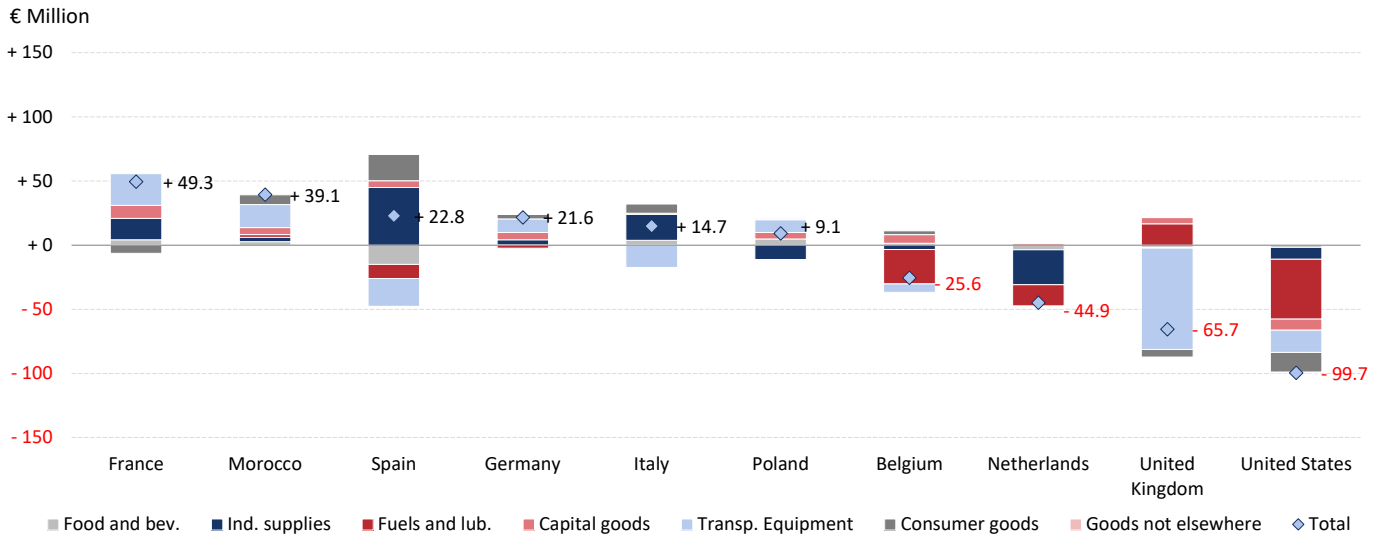
Also noteworthy is the Netherlands (-20.7%), mainly due to the reductions in the categories of *Industrial supplies* and *Fuels and lubricants*.

By contrast, there was a notable increase in exports to France and, although not one of the main partners in the previous year, to Ukraine, with transactions involving *Vehicles and other transport equipment* being particularly significant in both markets.



Figure 4

YEAR-ON-YEAR CHANGES (M€) IN EXPORTS BY PARTNER COUNTRY (TOP10) AND BEC

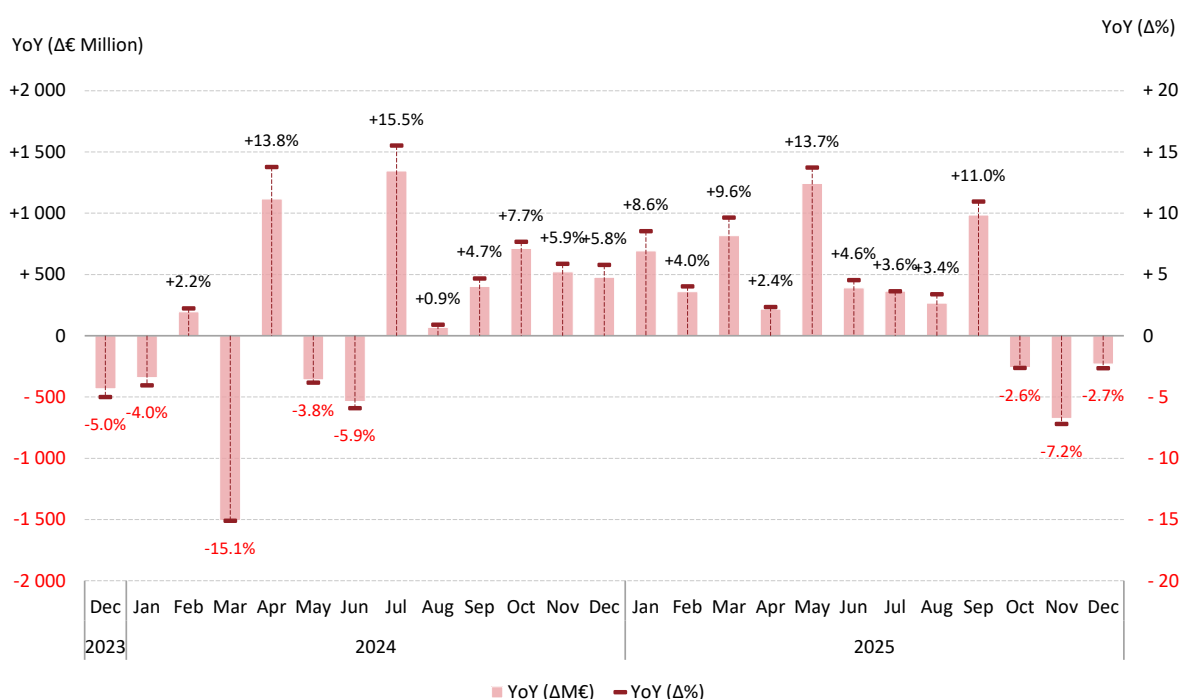


FUELS AND LUBRICANTS RESPONSIBLE FOR THE DECREASE IN IMPORTS

In December 2025, imports of goods fell by 2.7% compared to the same period last year (-7.2% in November 2025). When excluding TTE transactions, i.e., transactions with a view to or following processing (without transfer of ownership)², the decrease in imports was slightly more pronounced (-4.0%; -2.2% in November 2025).

Figure 5

YEAR-ON-YEAR CHANGES IN IMPORTS (M€ AND %)



Excluding *Fuels and lubricants*, there was a 4.7% increase in imports in December 2025 (-5.4% in November 2025).

As with exports, the unit value index (prices) of imports remained negative, at -2.4% (-1.8% in November 2025; -0.2% in December 2024). Excluding petroleum products, the price change was also negative, -1.8% (-1.4% in November 2025; +0.7% in December 2024).

From the previous month, imports decreased by 2.9% in December (-10.2% in November 2025). Excluding TTE, the change in imports this month was -3.3% (-10.4% in the previous month).

In the 4th quarter of 2025, imports decreased by 4.2% compared to the same period of the previous year (+0.2% in the quarter ending in November 2025). Excluding TTE transactions, imports decreased by 3.1% in this period (+1.9% in the quarter ending in November 2025).

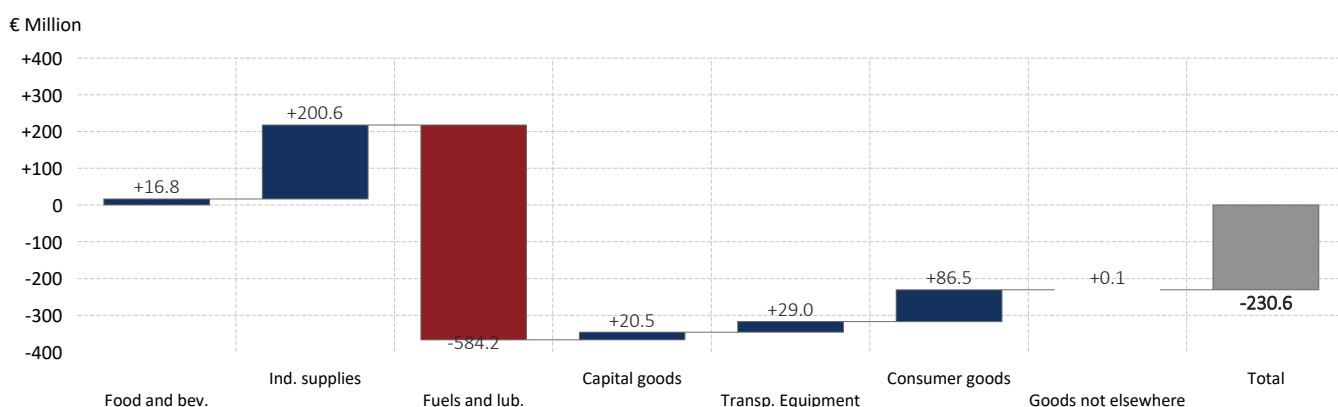
In 2025, imports increased by 3.9% compared to the previous year (+2.0% in 2024). However, when excluding TTE transactions, this growth was more modest (+2.3%; +1.2% in 2024).

² See methodological notes 2 and 3 for more detail on the nature of transactions with a view to or following processing.

In December 2025, there was a notable decrease in *Fuels and lubricants* (-52.7%), mainly *Crude petroleum oils* from Brazil and Algeria, due to reductions in both volume (-49.9%), still justified by the shutdown of national refinery units, and prices drop (-5.4%). Conversely, there was an increase in *Industrial supplies* (+9.6%), mainly *Chemical products* from China, mostly associated with transactions without transfer of ownership. Excluding these transactions, imports of goods in the *Industrial supplies* category increased by only 5.0%.

Figure 6

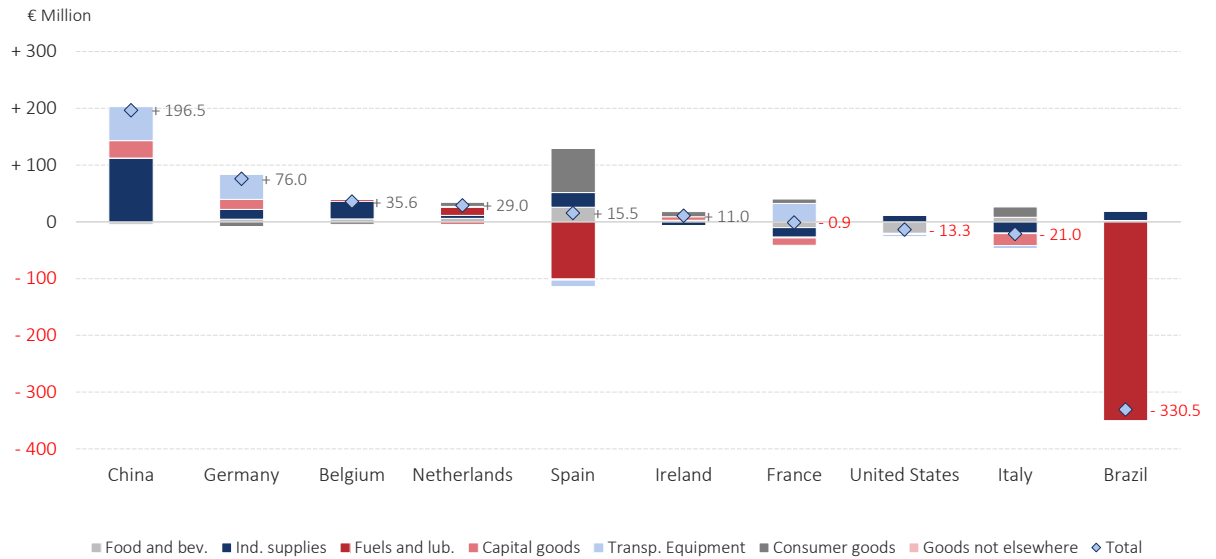
YEAR-ON-YEAR CHANGES (M€) IN IMPORTS, BY BEC



In December 2025, considering the main partner countries in the previous year, there was a notable decrease in imports from Brazil (-83.3%) and, although not one of the main partner countries in the previous year, Algeria (-71.1%), mostly *Fuels and lubricants* in both cases. Also noteworthy is the 51.6% increase in imports from China, particularly *Industrial supplies*, namely *Chemical products*, mainly as a result of transactions with a view to or following processing (without transfer of ownership). However, when this type of transaction is excluded imports from China increased by 26.1%, with the categories of *Transport equipment* and *Capital goods and parts thereof* standing out.

Figure 7

YEAR-ON-YEAR CHANGES (M€) IN IMPORTS BY PARTNER COUNTRY (TOP 10) AND BEC

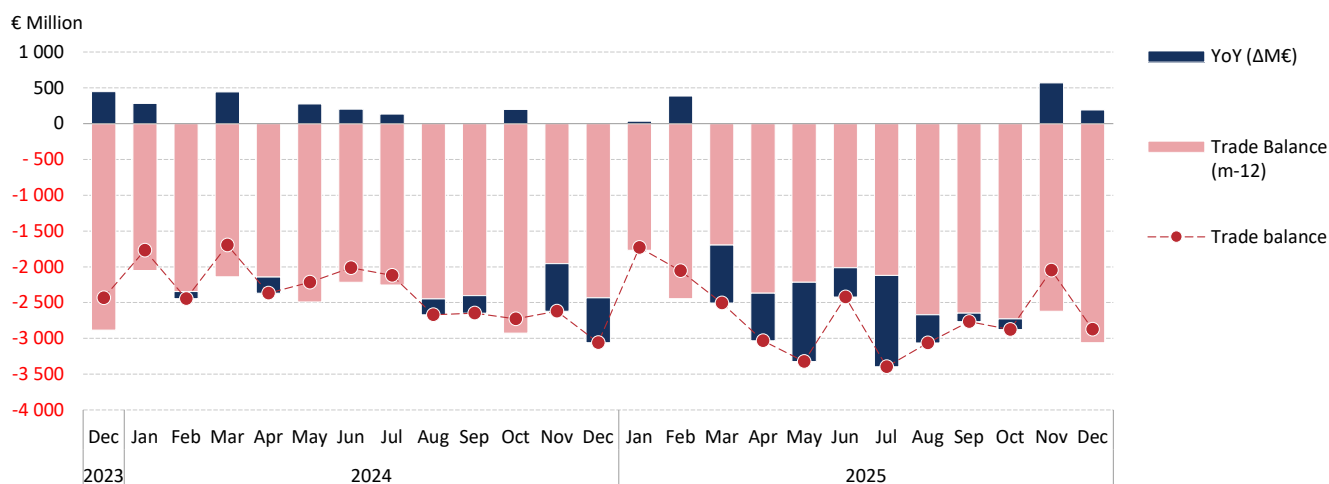


TRADE DEFICIT IN GOODS DECLINED FOR THE SECOND CONSECUTIVE MONTH

In December 2025, the goods trade deficit reached EUR 2,871 million, decreasing by EUR 190 million compared to December 2024 and increasing by EUR 823 million from the previous month. Excluding TTE transactions, the goods trade deficit amounted to EUR 2,807 million, reflecting a decrease of EUR 302 million year-on-year and an increase of EUR 514 million compared to the previous month.

Figure 8

TRADE BALANCE IN THE LAST 25 MONTHS



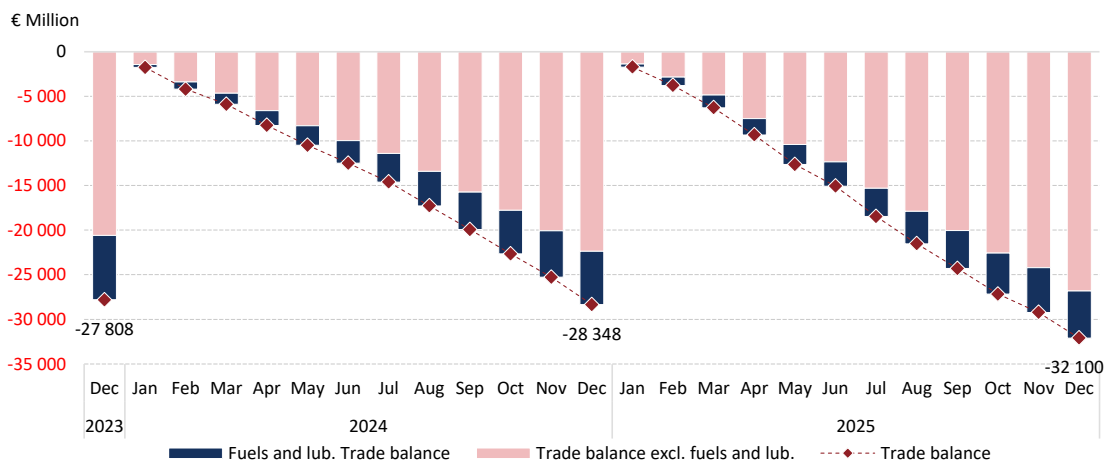
Fuels and lubricants accounted for 9.5% of the goods trade deficit in December 2025 (19.2% in November 2025 and 25.3% in December 2024). Excluding the effect of these products, the trade deficit stood at EUR 2,599 million, representing an increase of EUR 314 million compared to December 2024 and EUR 943 million from the previous month.

In the 4th quarter of 2025, and compared to the same period last year, imports decreased more than exports, resulting in a EUR 611 million reduction in the trade deficit, to EUR 7,798 million. Excluding TTE, there was also a reduction in the trade deficit (EUR 155 million), to EUR 7,933 million.

In 2025, the trade deficit reached EUR 32,100 million, reflecting a year-on-year deterioration of EUR 3,752 million. Excluding TTE transactions, the trade deficit totalled EUR 32,309 million, reflecting a deterioration of EUR 3,544 million compared to 2024.



Figure 9
TRADE BALANCE IN THE LAST 25 MONTHS
CUMULATIVE VALUES



SUMMARY OF THE FIRST 2025 ANNUAL RESULTS

The first 2025 annual results point to increases in exports and imports of +0.5% and +3.9%, respectively (+2.0% and +2.0% in 2024, in the same order), with the trade deficit worsening by EUR 3,752 million to EUR 32,100 million, resulting in a deterioration of 2.4 p.p. in the coverage rate (71.2% in 2025).

Transactions without transfer of ownership (TTE) had a positive effect on both flows' variations, as when excluding this type of transaction, the change for exports becomes negative, -1.6%, and that for imports is lessened, +2.3%, in this case giving rise to a deficit of EUR 32,309 million (worsening of EUR 3,544 million compared to 2024).

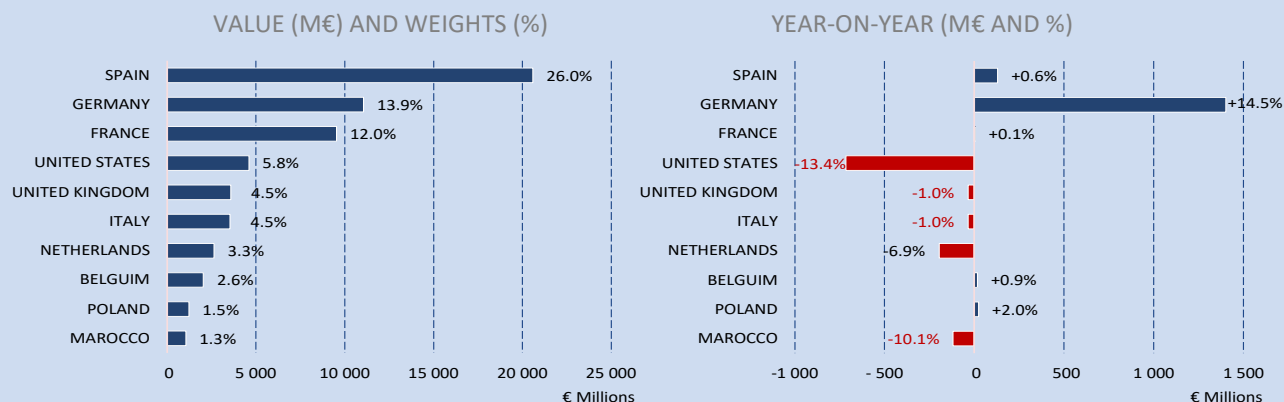
Excluding *Fuels and lubricants*, in 2025, exports and imports increased by 2.5% and 6.6% respectively (+1.5% and +3.1% in 2024, in the same order). The goods trade deficit, excluding this category of products, amounted to EUR 26,817 million, worsening by EUR 4,457 million compared to 2024.

Exports of goods

In 2025, national exports totalled EUR 79,312 million, accounting for an annual increase of 0.5% (EUR +417 million). Germany was the market that contributed the most to this increase in Portuguese exports, remaining the second main destination for national goods, weighing 13.9% (+1.7 p.p. compared to 2024). Exports to this country increased by 14.5% (EUR +1,402 million), mainly consisting of *Industrial supplies*, which largely resulted from transactions without transfer of ownership. In turn, the United States was the market most negatively impacting national exports in 2025, decreasing by 13.4% from the previous year (EUR -715 million), mainly due to the decrease in *Fuels and lubricants*.

Figure 1

EXPORTS BY COUNTRY [TOP10]³, 2025



³ The TOP10 is for the base year, 2024, although the values, weights and variations are, naturally, those for 2025.

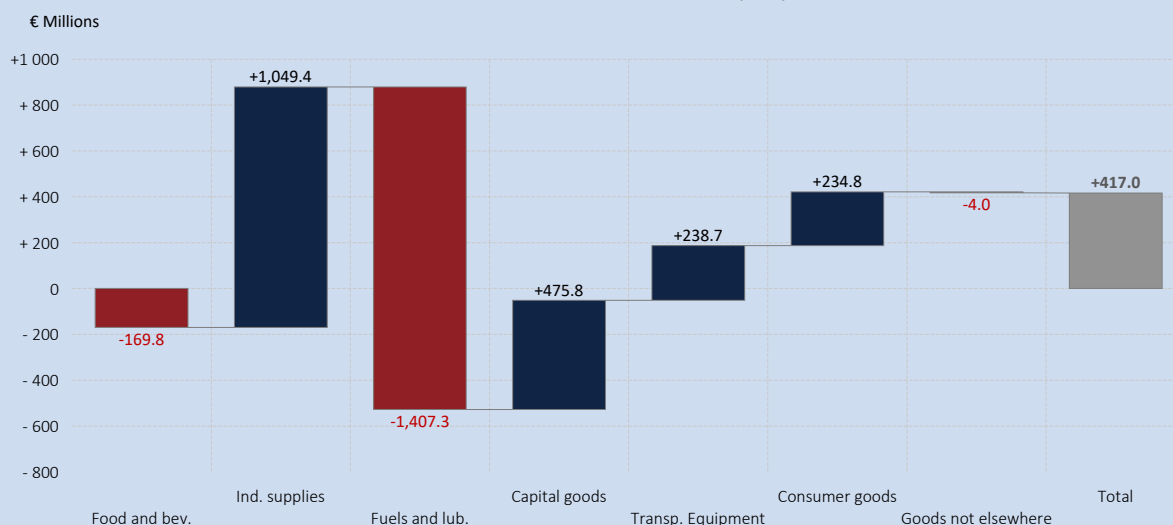
Spain remained the main destination for national exports in 2025, accounting for 26.0% of total exports, up 0.6% (EUR +131 million) from the previous year.

Spain, Germany, and France remained the main foreign customers in 2025. Together, they accounted for more than half of total national exports (51.9%, +1.7 p.p. compared to 2024). The United States remained the main destination outside the EU (4th overall), accounting for 5.8% (-0.9 p.p. compared to 2024), followed by the United Kingdom, which was the 5th main destination, accounting for 4.5% (-0.1 p.p. from the previous year).

From the analysis of the structure of national exports of goods, *Industrial Supplies* was the main export category in 2025 (33.0% of the total; EUR 26,155 million). *Transport equipment* followed (17.4% share; EUR 13,808 million) and *Consumer goods* (17.2%; EUR 13,641 million). Concerning the breakdown of annual changes, *Industrial supplies* is the product category with the highest increase compared to last year (+4.2%; EUR +1,049 million), mainly to Germany. Conversely, *Fuels and lubricants* decreased the most (-26.0%; EUR -1,407 million).

Figure 2

YEAR-ON-YEAR CHANGES IN EXPORTS (M€), BY BEC



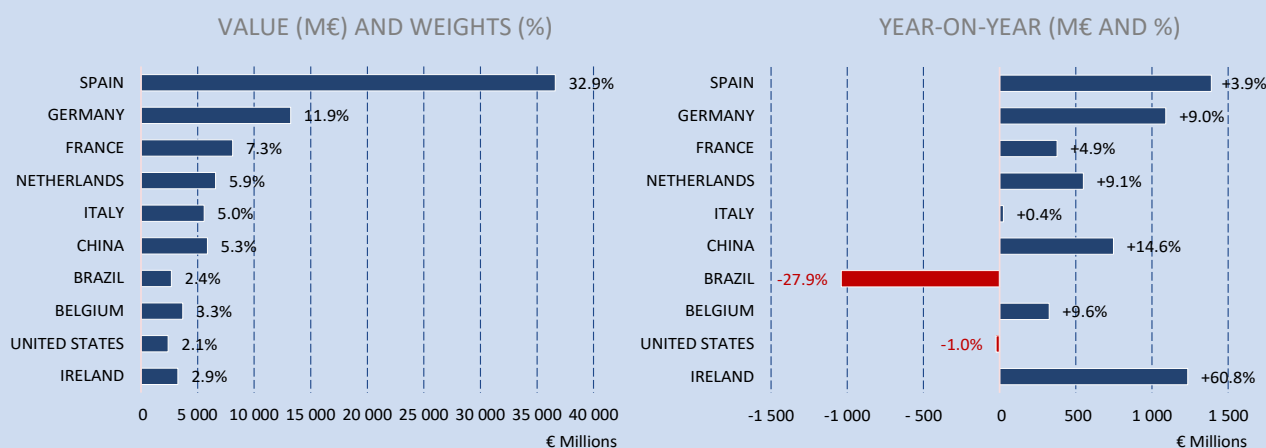
Imports of goods

In 2025, national imports amounted to EUR 111,412 million, increasing by EUR 4,169 million from the previous year. The market that contributed the most to this increase in Portuguese imports was Spain, which remained the main supplier of goods to Portugal, with a 32.9% share (+0.0 p.p. from 2024). Imports from the neighbouring country increased by 3.9% (EUR +1,389 million) in 2025, with increases in almost all product categories, particularly *Consumer goods*.

Brazil also stands out, with imports from this market falling by 27.9% in 2025 (EUR -1,039 million), mostly due to the decrease in *Fuels and lubricants*, with lesser traded quantities and lower prices.

Figure 3

IMPORTS BY COUNTRY [TOP10]⁴, 2025



As with exports, Spain, Germany, and France remained the main suppliers of goods to Portugal in 2025, accounting for 52.0% of national imports (+0.6 p.p. compared to 2024). The Netherlands remained the 4th largest supplier, with a share of 5.9% (+0.3 p.p. from the previous year), followed by China (5.3%; +0.5 p.p.), which joined the TOP 5 suppliers, swapping positions with Italy.

⁴ The TOP10 is for the base year, 2024, although the values, weights and variations are, naturally, those for 2025.

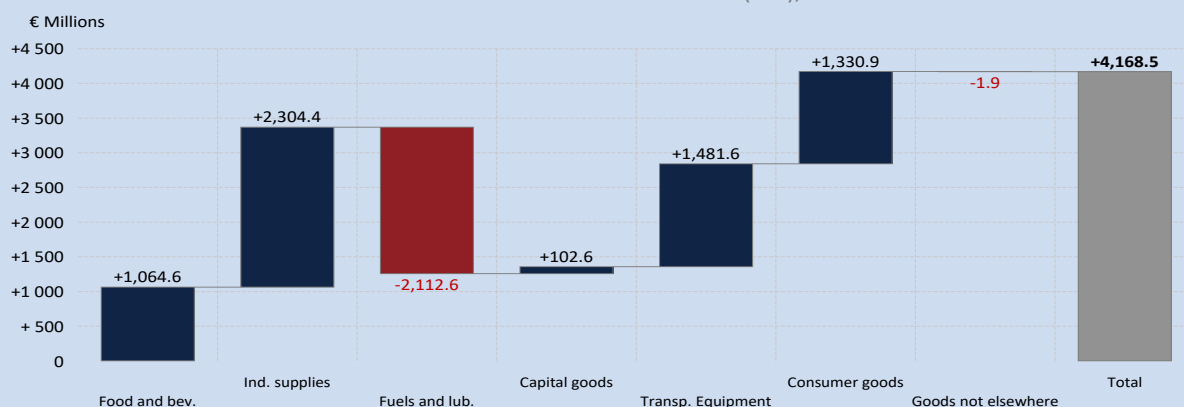
It is important to note the significant changes in the ranking of the top 10 suppliers: Ireland ranked 8th (10th in 2024), recording the second largest increase in imports in 2025 (+60.8%; EUR +1,234 million), as imports corresponding to transactions without transfer of ownership almost doubled. Conversely, Brazil fell from 7th to 9th position due to the decrease previously mentioned.

In 2025, in the structure of national imports of goods, *Industrial supplies* continued to be the main product category, accounting for 29.7% of the total (EUR 33,055 million), followed by *Capital goods and parts thereof*, standing for 16.8% (EUR 18,742 million).

The breakdown of the year-on-year change in imports reveals that the largest increase occurred in *Industrial supplies* (+7.5%; EUR +2,304 million), mainly from Ireland, mostly corresponding to transactions without transfer of ownership. The largest decrease occurred in *Fuels and lubricants* (-18.5%; EUR -2,113 million).

Figure 4

YEAR-ON-YEAR CHANGES IN IMPORTS (M€), BY BEC



Trade balance in goods

The trade deficit increased by EUR 3,752 million compared to the previous year, amounting to EUR 32,100 million in 2025. This unfavourable development resulted from an increase in imports (EUR +4,169 million) that exceeded that of exports (EUR +417 million).

Industrial supplies, *Transport equipment*, and *Food and beverages* were the categories that contributed the most to the worsening of the trade deficit in 2025 (worsening by EUR 1,255, EUR 1,243, and EUR 1,234 million, respectively).

Industrial supplies accounted for the largest deficit (EUR 6,900 million), after ranking third in 2024. The second largest deficit was in *Capital goods and parts thereof* (EUR 6,828 million), after ranking first in 2024, as a result of a EUR 373 million decrease in the deficit.

Fuels and lubricants and *Capital goods and parts thereof* were the categories that contributed favourably to the trade balance performance in 2025. The deficit in *Fuels and lubricants* fell by EUR 705 million to EUR 5,283 million.

Figure 5

YEAR-ON-YEAR CHANGES (M€) IN TRADE BALANCE, BY BEC



METHODOLOGICAL NOTE

1. International Trade compiles statistical information about the trade in goods with the European Union (Intra-EU trade) and Third Countries (Extra-EU trade). In terms of Intra-EU trade statistics, it includes adjustments for non-responses as well as for enterprises with transactions below the defined exemption thresholds (which exempts a significant number of enterprises from providing statistical data). Since February 2020, the United Kingdom has been considered a Third Country. In this press release, for comparison purposes, in the analyses vis-à-vis the same month of the previous year or the previous month, the United Kingdom is considered a Third Country in these periods.
2. In International Trade in Goods Statistics (ITGS), as a general principle, the flows of goods are recorded as they physically cross borders of the statistical territory, this concept being independent of ownership changes. Although the use of the term “trade” in “trade statistics” reflects the dominant role of buying and selling transactions in the context of cross-border movements of goods, many other movements of goods between countries that do not result from buying and selling transactions are covered by trade statistics as well. An example of this is transactions with a view to or following processing (without transfer of ownership), which are treated differently for recording in National Accounts, which can lead to significant differences in the magnitude of transactions recorded between the two areas of statistical production.
3. Transactions with a view to or following processing (without a change of ownership): processing work includes operations of transformation, construction, assembly, improvement, renovation, modification, and conversion, intended to produce a new or improved item. It does not necessarily imply a change in the product classification. In these operations, there is no change in the economic ownership of the goods. On imports of goods with a view to processing (nature of transaction code 41/42), the value corresponds to the estimated market value of the goods intended for processing. Once the work has been completed, the exported goods (nature of transaction code 51/52) are recorded in International Trade in Goods statistics, such that the value includes the original value of the goods that arrived for processing, including the price of the material and parts added in Portugal and the cost of processing. Repair works are not included in transactions with a view to or following processing.
4. For simplification purposes, in the scope of International trade in goods, transactions can be grouped by their nature:
 - [TTP] Transactions with transfer of ownership (with or without financial compensation);
 - [TTE] Transactions with a view to or following processing (without transfer of ownership);
 - [OUT] Other transactions.
5. For simplification purposes, the terms associated with International Trade Statistics are narrowed to “imports” and “exports”, stating, however, which market is being referred to (Intra-EU, Extra-EU, and International Trade, including the first two).

In this press release, the following statistical data are used:

2022: Intra-EU trade – January to December definitive results;

Extra-EU trade – January to December definitive results.

2023: Intra-EU trade – January to December definitive results;

Extra-EU trade – January to December definitive results.

2024: Intra-EU trade – January to December definitive results;

Extra-EU trade – January to December definitive results.

2025: Intra-EU trade – January to December monthly preliminary results;

Extra-EU trade – January to December monthly preliminary results.

6. Due to the rounding of numbers, totals might not correspond to the sum of the indicated parcels.
7. Month-to-month growth rate – it compares the level of each variable between two consecutive months. Although it allows an up-to-date follow-up of the evolution of each variable, the value of this variation is particularly influenced by seasonal fluctuations and other specific effects in one or both compared months.
8. Year-on-year growth rate – it compares the level of each variable between the current period and the same period of the previous year. Its evolution is less biased by seasonal fluctuations; however, it might be influenced by this type of effect located in a specific period compared.
9. Revisions: with the release of the definitive results for the year 2021, there was an adjustment of the revisions policy applied to International Trade, anticipating the release of the annual definitive results in one month, which allows the incorporation of data in the Annual National Accounts and Balance of Payments. Therefore, each month, the information regarding month *m* (on a 40-day basis) will continue to be published and the previous four months will be revised. The annual preliminary results concerning year *N* are released in June of *N*+1, i.e., at the last (fourth) revision of December. The release of definitive results takes place in August of *N*+1. The monthly released information for intra-EU transactions contains routine revisions due to the replacement of estimations with new data received in the meantime, and, to a lesser extent, the replacement of values previously reported by corrections reported by the enterprises. The following table shows the impact of those revisions on the year-on-year rate of change (three months) disseminated in the previous press release:

YEAR-ON-YEAR GROWTH RATE - SEPTEMBER TO NOVEMBER 2025		
	PREVIOUS PUBLICATION	CURRENT PUBLICATION
EXPORTS	1.7	1.7
IMPORTS	-0.4	0.2

10. The BEC nomenclature - Classification by Broad Economic Categories doesn't include *Gold for monetary use* (CN 71082000) and *Coins, including coins with legal tender (except medals, coins mounted in objects of personal adornment, coins with character collectibles with numismatic value, waste, and scrap)* (CN 71189000). The sum of the various BEC categories may not match the total trade due to these exclusions and confidentiality reasons.
11. Intra-EU trade concerning the Euro Zone includes, since 2017, stores and provisions within the framework of Intra-EU trade, which in previous years were included in the non-Euro Zone. However, given the slight weight (lower than 0.1%) in total trade, the data are comparable for all series available. The transactions of goods with Croatia are included in the Euro Area only as of January 2023, the reference month of the information. The breakdown by country is available in the tables attached to this press release and in the statistical indicators available on the Statistics Portugal website.
12. In compliance with Commission Implementing Regulation (EU) 2020/1197 (in Annex V, section 2 (2. a)), as of January 2024 (reference month), EU goods entering Portugal with the Extra-EU market as their destination – quasi-exports – are no longer

compiled in the context of International Trade in Goods in Portugal, being this information sent to the corresponding Member State, as part of microdata exchange so that it can be included in the compilation of its exports. Similarly, Portugal has also started to receive monthly information on extra-EU exports from other Member States, which, after validation, is integrated into the compilation of International Trade in Goods data for the respective reference month.

13. Unit Value Indices for International Trade in Goods

The monthly unit value indices for December 2025 are released with the publication of this press release on the Statistics Portugal Portal (see the links below).

- [Monthly unit value indices of exports \(Month-on-month growth rate, price - %\)](#)
- [Monthly unit value indices of exports \(Month-on-month growth rate, value - %\)](#)
- [Monthly unit value indices of exports \(Month-on-month growth rate, volume - %\)](#)
- [Monthly unit value indices of imports \(Month-on-month growth rate, price - %\)](#)
- [Monthly unit value indices of imports \(Month-on-month growth rate, value - %\)](#)
- [Monthly unit value indices of imports \(Month-on-month growth rate, volume - %\)](#)

The starting Universe for the monthly indices corresponds to International Trade in Goods, calculated on a 40-day basis for the reference month, with the most up-to-date results at that moment for both periods (month and month-on-month). Definitive results for 2012 to 2024 and preliminary results for 2025 are used to calculate Quarterly Indices. The monthly indices are temporally consistent with the quarterly indices (40 days), using the Chow-Lin method for this purpose.

In International Trade in Goods, certain records are excluded for the calculation of Unit Value Indices, such as transactions with a statistical value lower than EUR 1,000, based on the number of observations by enterprise/Economic Area/CN8, as well as Chapters 98 and 99 of the CN and NC8 codes with a net mass of less than 0.5 kg. However, the representativeness of the sample within each product group is guaranteed, with total coverage exceeding 80%.

The unit value indices are calculated at the finest level of information (around 9,500 NC8 codes) and are subsequently aggregated into *Paasche* indices (price) at the CPA (Statistical Classification of Products by Activity) level for quarterly indices, and at the total and total excluding petroleum products for monthly indices. The calculated indices reflect variations compared to the same period of the previous year (year-on-year). It is also important to note that, as these are unit value indices and not actual price indices, their variation reflects, in addition to price changes, the effect of changes in the composition and the quality of the goods considered at each finest level of information.



The dissemination of the unit value indices is ensured according to the following calendar:

REFERENCE PERIOD	MONTHLY INDICES INDICATORS	QUARTERLY INDICES INDICATORS
		REFERENCE QUARTER
JANUARY	12/03/2025	4 th QUARTER/24
FEBRUARY	09/04/2025	
MARCH	09/05/2025	
APRIL	09/06/2025	1 st QUARTER/25
MAY	10/07/2025	
JUNE	08/08/2025	
JULY	09/09/2025	2 nd QUARTER/25
AUGUST	10/10/2025	
SEPTEMBER	10/11/2025	
OCTOBER	10/12/2025	3 rd QUARTER/25
NOVEMBER	09/01/2026	
DECEMBER	09/02/2026	

The quarterly indices related to the period 2012-2025 are available as statistical indicators on the Statistics Portugal Portal, with data broken down by Statistical Classification of Products by Activity (CPA), including the corresponding value and volume indices.

The monthly indices concerning the period 2012-2025 are made available as statistical indicators on the Statistics Portugal Portal, with data available for the total and total excluding petroleum products, including the corresponding value and volume indices.



ACRONYMS AND DESIGNATIONS

BEC – Classification by Broad Economic Categories, third revision

CIF – Cost, Insurance, and Freight

CN – Combined Nomenclature

CPA – Statistical classification of products by activity, version 2.1

EU – European Union

FOB – Free on Board

IT – International Trade

OUT - Other transactions

TTE - Transactions with a view to or following processing (without transfer of ownership)

TTP - Transactions with transfer of ownership (with or without financial compensation)

CONVENTIONAL SIGNS

ə – Value less than half the module of the unit used

Further statistical information on International Trade can be found on the [Statistics Portugal website](https://ine.pt).

Data of next monthly press release – 12 March 2026

Data of next Flash estimate release (1st quarter of 2026) - 29 April 2026
